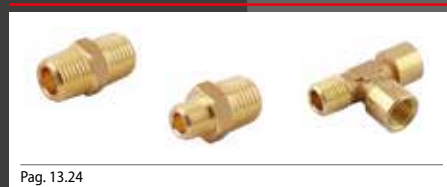


Serie Adapters

| | | | | | | | | |
|--|--|---|---|---|--|---|--|---|
|  2000 Pag. 13.6 |  2010 Pag. 13.6 | New  2015 Pag. 13.6 |  2020 Pag. 13.6 |  2030 Pag. 13.7 | New  2035 Pag. 13.7 |  2040 Pag. 13.7 |  2050 Pag. 13.7 | New  2055 Pag. 13.8 |
|  2060 Pag. 13.8 |  2070 Pag. 13.8 |  2080 Pag. 13.8 |  2090 Pag. 13.9 |  2092 Pag. 13.9 |  2095 Pag. 13.9 |  2096 Pag. 13.9 |  2110 Pag. 13.10 |  2115 Pag. 13.10 |
|  2116 Pag. 13.10 |  3000 Pag. 13.10 |  3010 Pag. 13.11 |  3015 Pag. 13.11 |  3015V Pag. 13.11 |  3020 Pag. 13.11 |  3021 Pag. 13.12 |  3025 Pag. 13.12 |  3026 Pag. 13.12 |
|  3030 Pag. 13.12 |  3040 Pag. 13.13 |  3044 Pag. 13.14 |  3045 Pag. 13.14 |  3047 Pag. 13.15 |  3050 Pag. 13.15 |  3055 Pag. 13.15 |  3060 Pag. 13.15 |  1704 Pag. 13.16 |
|  4000 Pag. 13.16 |  4010 Pag. 13.16 |  4020 Pag. 13.16 |  4030 Pag. 13.17 |  4040 Pag. 13.17 |  4050 Pag. 13.17 |  5000 Pag. 13.17 |  5010 Pag. 13.18 |  5020 Pag. 13.18 |
|  5050 Pag. 13.18 |  6000 Pag. 13.18 |  6010 Pag. 13.19 |  6020 Pag. 13.19 |  6025 Pag. 13.19 |  6030 Pag. 13.19 |  6040 Pag. 13.20 |  6047 Pag. 13.20 |  6048 Pag. 13.20 |
|  6070 Pag. 13.20 |  6080 Pag. 13.21 |  6090 Pag. 13.21 |  82205 Pag. 13.21 | New  82241 Pag. 13.22 |  82242 Pag. 13.22 | New  82320 Pag. 13.22 |  7000 Pag. 13.27 |  7005 Pag. 13.27 |
|  7010 Pag. 13.27 |  7020 Pag. 13.27 |  7030 Pag. 13.28 |  7040 Pag. 13.28 |  7050 Pag. 13.28 |  7060 Pag. 13.28 |  7070 Pag. 13.29 |  7080 Pag. 13.29 |  AS715 Pag. 13.30 |
|  7105 Pag. 13.30 |  7115 Pag. 13.30 |  7120 Pag. 13.32 |  7130 Pag. 13.32 |  7140 Pag. 13.32 |  7150 Pag. 13.32 | | | |

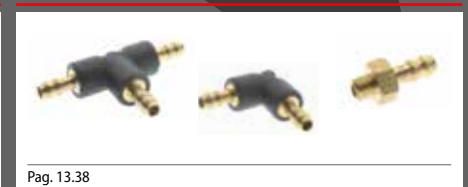
Serie Food&Drinks - Fittings CW510L



Serie 1800 - Fittings with bayonet connection



Serie 15000 - Hose adapters for plastic tubes



RACCORDI FILETTATI

NICKEL-PLATED BRASS ADAPTORS

GEWINDEVERSCHRAUBUNGEN

ACCESSOIRES DE RACCORDEMENT- ADAPTATEURS LAITON

RACORDAJE ROSCADO

ACESSÓRIOS ROSCADOS EM LATÃO NIQUELADO



Serie Adapters

ADAPTERS

La serie di Aignep, completamente realizzati in ottone nichelato, costituiscono il completamento dell'offerta in termini di adattatori, riduzioni, tappi e componenti per realizzare al meglio le vostre applicazioni e circuiterie. Con prestazioni importanti in termini di pressioni e temperature (+300°C), sono realizzati in una ampia gamma base. Filettature BSPT, BSPP e Metriche.

Completano la gamma un'importante serie di manifold di distribuzione in alluminio e di silenziatori in bronzo sinterizzato e materiali plastici.

Principali vantaggi

- Gamma completa M5 - 1" Filettati e portagomma
- Compatibilità numerosi fluidi industriali
- Robustezza meccanica
- Versione attacchi a baionetta standard
- Silicon Free

Applicazioni

- Aria Compressa
- Automazione Pneumatica
- Circuiti acqua industriale
- Gas inerti, vapore, fluidi
- Vuoto

Les adaptateurs en laiton nickelé offre un grand choix de configurations possibles. Aignep propose une large gamme de mamelons, réductions, bouchons, T, L, adaptateurs pour tuyaux.

Performances élevées en terme de pression et de température (+ 300 °C).
Filetages BSPT, BSPP et métrique.

Les nourrices de distribution en aluminium et les silencieux complètent la gamme.

Principaux avantages

- Gamme complète M5 - 1"
- Tous fluides compatibles
- Résistance mécanique
- Standard et raccords Baïonnettes
- Sans silicone

Applications

- Air comprimé
- Automatismes pneumatiques
- Circuits d'eau industrielle
- Gaz neutres, vapeur
- Vide

Nickel-plated brass threaded adaptors is the argest range of Aignep.

Countless configurations in multiple sizes: nipples, reductions, plugs, T, L, hose adaptors.

High performances in pressure and temperatures (+300°C).

Sharp threads BSPT, BSPP & Metric.

Aluminium manifolds and silencers complete the range.

Main advantages

- Complete Range M5 - 1"
- All Fluids compatible
- Mechanical Resistance
- Standard and Bayonet connection
- Silicon Free

Applications

- Compressed Air
- Pneumatic Automation
- Industrial water circuits
- Inert Gases, Fluids, Steam
- Vacuum

Die Messing vernickelten Gewindeadapter von Aignep, komplettieren das umfangreiche Sortiment.

Unzählige Konfigurationen in verschiedenen Größen: Nippel, Reduzierungen, Stopfen, T- und L-Verschraubungen, Schlauchtüllen, etc. Hohe Leistungen im Druck- und Temperaturbereich (+ 300 °C).

Präzise Gewinde: BSPT, BSPP und metrisch. Verteilerblöcke aus Aluminium und Schalldämpfer runden das Angebot ab

Hauptvorteile

- Vollständiges Sortiment M5 - 1"
- Kompatibel mit allen Medien
- Mechanische Festigkeit
- Standard and Bajonet Anschluss
- Silikonfrei

Anwendungen

- Druckluft
- Pneumatische Automation
- Industrielle Wasserkreisläufe
- Inertgase, Flüssigkeiten, Dampf
- Vakuum

La serie de accesorios Aignep, completamente realizada en Latón niquelado, completa la oferta en términos de adaptadores, reducciones, tapones, y componentes para realizar de la mejor forma vuestras aplicaciones y circuitos.

Con importantes prestaciones en términos de presión y temperatura (+300°C), son realizados en una amplia gama base. Roscas BSPT, BSPP y Métricas.

Completan la gama una importante serie de regletas de distribución en aluminio y de silenciadores en bronce sinterizado y material plástico.

Principales ventajas

- Gama completa M5-1" – roscados y espiga
- Compatibilidad con numerosos fluidos industriales
- Robustez mecánica
- Versión conexión a bayoneta standard
- Libres de silicona

Aplicaciones

- Aire comprimido
- Automatización neumática
- Circuitos de agua industrial
- Gases inertes, vapor, fluidos
- Vacío

Acessórios roscados em latão niquelado é o maior range de itens da linha da Aignep.

Incontáveis configurações em diversos tamanhos: niples, reduções, plugs, T, L, Espigões para mangueiras.

Itens para alta pressão e alta temperatura (+300°C).

Roscas precisas: BSPT, BSPP & Métrica, manifolds em alumínio e silenciadores completas o range de produtos.

Principais vantagens

- Completo Range de tamanhos : de M5 a 1"
- Compatível com todos os fluidos
- Resistência Mecânica
- Conexões do tipo standard e baioneta
- Livre de Silicone

Aplicações

- Ar Comprimido
- Automação Pneumática
- Circuitos de Água Industrial
- Gases Inertes, Fluidos, Vapor
- Vácuo



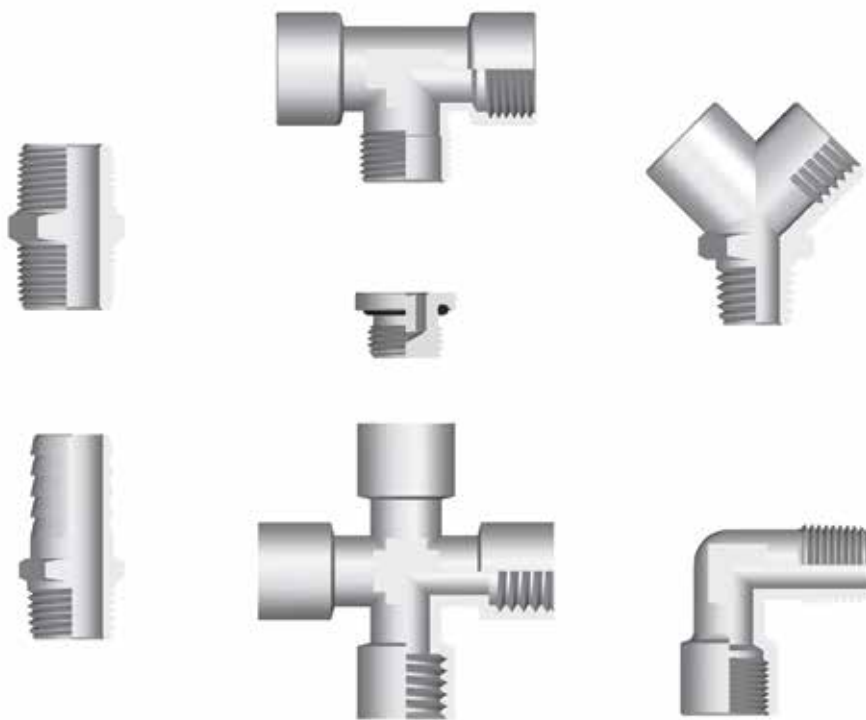
CARATTERISTICHE TECNICHE

TECHNICAL CHARACTERISTICS
 TECHNISCHE ANGABEN
 CARACTÉRISTIQUES TECHNIQUES
 CARACTERÍSTICAS TÉCNICAS
 CARACTERÍSTICAS TÉCNICAS



Norma di Riferimento

Reference standard
 Entspricht der Norm
 Norme de référence
 Normativa de referencia
 Norma de referência



Materiali e Componenti

IT

La maggior parte degli articoli di questa serie è composta da un unico particolare in OT UNI EN 12164/5 CW 614/7N e subisce un trattamento galvanico di nichelatura. Articoli prodotti in materiali diversi, verranno specificati all'interno del catalogo.

Component Parts and Materials

GB

The main part of these fittings is made in OT UNI EN 12164/5 CW 614/7N and undergo to a nickel-plating process. Different materials will be specified in the catalogue.

Komponenten und Materialien

DE

Die meisten Artikel in dieser Serie werden aus OT UNI EN 12164/5 CW 614/7N hergestellt und werden einer Nickel Oberflächenbehandlung unterzogen. Wenn Artikel mit anderen Materialien hergestellt sind, so wird das im Katalog direkt beim Produkt angegeben.

Matériaux et Composants

FR

La majeure partie des raccords de ce chapitre est fabriquée en laiton OT UNI EN 12164/5 CW 614/7N et traités par nickelage. Les autres matériaux sont précisés dans le catalogue sous l'article concerné.

Materiales y Componentes

ES

La mayor parte de los artículos de esta serie está compuesta de un solo material latón (OT UNI EN 12164/5 CW 614/7N) sometido a un tratamiento galvanico de niquelatura. Artículos producidos en materiales diversos, vendrán especificados al interior del catálogo.

Materiais e Componentes

PT

A maior parte dos itens desta série é fabricada em OT UNI EN 12164/5 CW 614/7N e passa por um tratamento galvânico de niquelamento. Itens produzidos com materiais diferentes, estarão especificados no catálogo.



| Misura Size Größe Dimensions Medida Tamanho | Pressione consigliata Pressure advised Empfohlener druck Pression conseillée Presión recomendada Pressão aconselhada |
|--|---|
| 1/8 | -0.99 bar ~ 150 bar |
| 1/4 | -0.99 bar ~ 100 bar |
| 3/8 | -0.99 bar ~ 75 bar |
| 1/2 | -0.99 bar ~ 50 bar |
| 3/4 | -0.99 bar ~ 85 bar |
| 1" | -0.99 bar ~ 80 bar |



Temperature massima

Maximum temperature
 Maximum temperatur
 Température maximale
 Temperatura máxima
 Temperatura máxima

+ 300 °C



Fluidi compatibili

Acqua / Olio / Aria compressa

Fluidi in genere per l'impiantistica idraulica, oleodinamica, idropneumatica, ecc.

Fluids

Water / Oils / Compressed air

Fluids in general for the hydraulic, pneumatic and oildynamic plants etc.

Geeignete Medien

Wasser / Oel / Druckluft

Medien im Allgemeinen für hydraulische-, hydropneumatische- und pneumatische Anlagen, usw.

Fluides compatibles

Eau / Huile / Air comprimé

Fluides courants utilisés en hydraulique et pneumatique, etc.

Fluidos compatibles

Agua / Aceite / Aire comprimido

Fluidos en general para los campos hidráulicos, neumáticos y oleodinámicos, etc.

Fluidos compatíveis

Água / Óleo / Ar comprimido

Fluidos em geral para aplicações hidráulicas, oleodinâmicas, hidropneumáticas, etc.



Tubi di Collegamento

IT

Tubi e raccordi in genere.

Connection Tubes

GB

Tubes and fittings in general.

Geeignete Rohre

DE

Rohre und Verschraubungen im Allgemeinen.

Tubes Conseillés

FR

Raccords et tubes compatibles.

Tubos de Conexión

ES

Tubo y racordaje en general.

Tubos de Conexão

PT

Tubos e conexões em geral.



Filettatura

IT

Gas conica conforme ISO 7.1, BS 21, DIN 2999.
Gas cilindrica conforme ISO 228 Classe A.
Metrica conforme ISO R/262.
NPTF conforme ANSI B1.20.5

Threads

GB

Tapered gas in conformity with ISO 7.1, BS 21, DIN 2999.
Parallel gas in conformity with ISO 228 Class A.
Metric in conformity with ISO R/262.
NPTF in conformity with ANSI B1.20.5

Gewindearten

DE

Konisches Gewinde nach Norm ISO 7.1, BS 21, DIN 2999.
Zylindrisches Gewinde nach Norm ISO 228 Classe A.
Metrisches Gewinde nach Norm ISO R/262.
NPTF nach norm ANSI B1.20.5

Filetages

FR

Filetage conique conforme: ISO 7.1, BS 21, DIN 2999.
Filetage cylindrique conforme: ISO 228 Class A.
Filetage métrique conforme: ISO R/262.
NPTF conforme: ANSI B1.20.5

Roscas

ES

Gas cónica conforme ISO 7.1, BS 21, DIN 2999.
Gas cilíndrica conforme ISO 228 Clase A.
Métrica conforme ISO R/262.
NPTF conforme ANSI B1.20.5

Roscas

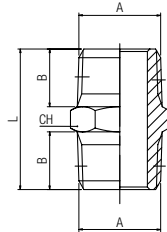
PT

Gas cônica conforme ISO 7.1, BS 21, DIN 2999.
Gas paralela conforme ISO 228 Classe A.
Métrica conforme ISO R/262.
NPTF conforme ANSI B1.20.5

2000

NIPPLO CONICO

NIPPLE (TAPER)
DOPPELNIPPEL KONISCH
MAMELON DOUBLE CONIQUE
MACHÓN CÓNICO
NIPLE COM ROSCA CÔNICA

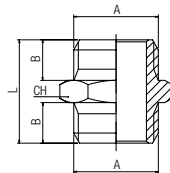


| Code | A | B | L | CH | Pack. |
|-------------------|-----|------|------|----|-------|
| 02000 00 01 02 NB | 1/8 | 7.5 | 19.5 | 12 | 10 |
| 02000 00 01 03 NB | 1/4 | 11 | 27 | 14 | 10 |
| 02000 00 01 04 NB | 3/8 | 11.5 | 28 | 17 | 10 |
| 02000 00 01 05 NB | 1/2 | 14 | 33.5 | 22 | 10 |
| 02000 00 01 07 NB | 3/4 | 16.5 | 40 | 27 | 10 |
| 02000 00 01 09 NT | 1" | 19 | 46.5 | 34 | 10 |

2010

NIPPLO CILINDRICO

NIPPLE (PARALLEL)
DOPPELNIPPEL ZYLINDRISCH
MAMELON DOUBLE, CILINDRIQUE
MACHÓN CILÍNDRICO
NIPLE COM ROSCA PARALELA



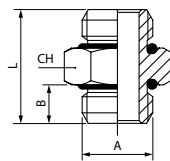
| Code | A | B | L | CH | Pack. |
|-------------------|-----|-----|------|----|-------|
| 02010 00 01 PG NB | M3 | 2.8 | 10 | 5 | 10 |
| 02010 00 01 B5 NB | M5 | 4 | 11.5 | 8 | 10 |
| 02010 00 01 02 NB | 1/8 | 6 | 16.5 | 14 | 10 |
| 02010 00 01 03 NB | 1/4 | 8 | 21 | 17 | 10 |
| 02010 00 01 04 NB | 3/8 | 9 | 23 | 19 | 10 |
| 02010 00 01 05 NB | 1/2 | 10 | 25.5 | 24 | 10 |
| 02010 00 01 07 NB | 3/4 | 12 | 29.5 | 30 | 10 |
| 02010 00 01 09 NB | 1" | 12 | 32 | 40 | 10 |

2015

NIPPLO CILINDRICO CON O-RING NBR

NIPPLE (PARALLEL) WITH NBR O-RING
DOPPELNIPPEL ZYLINDRISCH MIT NBR O-RING
MAMELON DOUBLE, CILINDRIQUE AVEC JOINT TORIQUE NBR
MACHÓN CILÍNDRICO CON TORICA NBR
NIPLE COM ROSCA PARALELA E O-RING NBR

New



| Code | A | B | L | CH | Pack. |
|--------------|-----|-----|------|----|-------|
| 02015 00 001 | M5 | 3.6 | 11.5 | 8 | 10 |
| 02015 00 002 | 1/8 | 5.4 | 16.5 | 14 | 10 |
| 02015 00 003 | 1/4 | 7.1 | 21 | 17 | 10 |
| 02015 00 004 | 3/8 | 8.1 | 23 | 20 | 10 |
| 02015 00 005 | 1/2 | 9.5 | 26.5 | 25 | 10 |
| 02015 00 006 | 3/4 | 11 | 30.5 | 34 | 10 |
| 02015 00 007 | 1" | 12 | 32.5 | 40 | 10 |



Temperature

min

- 20 °C

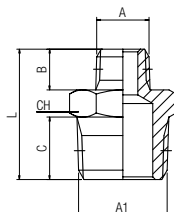
max

+ 80 °C

2020

NIPPLO DI RIDUZIONE CONICO

REDUCING NIPPLE (TAPER)
DOPPELNIPPEL REDUZIERT KONISCH
MAMELON DOUBLE INÉGAL, CONIQUE
MACHÓN CÓNICO DE REDUCCIÓN
NIPLE DE REDUÇÃO COM ROSCA CÔNICA

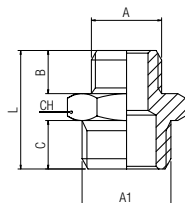


| Code | A | A1 | B | C | L | CH | Pack. |
|-------------------|-----|-----|------|------|------|----|-------|
| 02020 00 01 AT NB | 1/8 | 1/4 | 7.5 | 11 | 23.5 | 14 | 10 |
| 02020 00 01 3W NB | 1/8 | 3/8 | 7.5 | 11.5 | 24 | 17 | 10 |
| 02020 00 01 4W NB | 1/8 | 1/2 | 7.5 | 14 | 27 | 22 | 10 |
| 02020 00 01 7W NB | 1/4 | 3/8 | 11 | 11.5 | 27.5 | 17 | 10 |
| 02020 00 01 8W NB | 1/4 | 1/2 | 11 | 14 | 30.5 | 22 | 10 |
| 02020 00 01 ED NB | 1/4 | 3/4 | 11 | 16.5 | 34.5 | 27 | 10 |
| 02020 00 01 AC NB | 3/8 | 1/2 | 11.5 | 14 | 31 | 22 | 10 |
| 02020 00 01 AL NB | 3/8 | 3/4 | 11.5 | 16.5 | 35 | 27 | 10 |
| 02020 00 01 AH NB | 1/2 | 3/4 | 14 | 16.5 | 37.5 | 27 | 10 |
| 02020 00 01 AP NT | 1/2 | 1" | 14 | 19 | 41.5 | 34 | 10 |
| 02020 00 01 AS NT | 3/4 | 1" | 16.5 | 19 | 44 | 34 | 10 |

2030

NIPLO DI RIDUZIONE CILINDRICO

REDUCING NIPPLE (PARALLEL)
 DOPPELNIPPEL REDUZIERT ZYLINDRISCH
 MAMELON DOUBLE INÉGAL, CYLINDRIQUE
 MACHÓN CILÍNDRICO DE REDUCCIÓN
 NIPLE DE REDUÇÃO COM ROSCAPARALELA



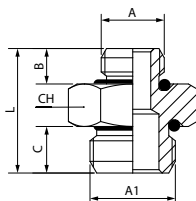
| Code | A | A1 | B | C | L | CH | Pack. |
|-------------------|-----|-----|----|----|------|----|-------|
| 02030 00 01 0W NB | M5 | 1/8 | 4 | 6 | 14.5 | 14 | 10 |
| 02030 00 01 AT NB | 1/8 | 1/4 | 6 | 8 | 19 | 17 | 10 |
| 02030 00 01 3W NB | 1/8 | 3/8 | 6 | 9 | 20 | 19 | 10 |
| 02030 00 01 7W NB | 1/4 | 3/8 | 8 | 9 | 22 | 19 | 10 |
| 02030 00 01 8W NB | 1/4 | 1/2 | 8 | 10 | 23.5 | 24 | 10 |
| 02030 00 01 AC NB | 3/8 | 1/2 | 9 | 10 | 24.5 | 24 | 10 |
| 02030 00 01 AH NT | 1/2 | 3/4 | 10 | 12 | 27.5 | 30 | 10 |

2035

NIPLO DI RIDUZIONE CILINDRICO CON O-RING NBR

REDUCING NIPPLE (PARALLEL) WITH NBR O-RING
 DOPPELNIPPEL REDUZIERT ZYLINDRISCH MIT NBR O-RING
 MAMELON DOUBLE INÉGAL, CYLINDRIQUE AVEC JOINT TORIQUE NBR
 MACHÓN CILÍNDRICO DE REDUCCIÓN CON TORICA NBR
 NIPLE DE REDUÇÃO COM ROSCA PARALELA E O-RING NBR

New



| Code | A | A1 | B | C | L | CH | Pack. |
|--------------|-----|-----|-----|-----|------|----|-------|
| 02035 00 001 | M5 | 1/8 | 3.6 | 5.5 | 14.5 | 14 | 10 |
| 02035 00 002 | 1/8 | 1/4 | 5.4 | 7 | 19 | 17 | 10 |
| 02035 00 003 | 1/8 | 3/8 | 5.4 | 8 | 20 | 20 | 10 |
| 02035 00 004 | 1/4 | 3/8 | 7.1 | 8 | 22 | 20 | 10 |
| 02035 00 005 | 1/4 | 1/2 | 7.1 | 9.5 | 23.5 | 25 | 10 |
| 02035 00 006 | 3/8 | 1/2 | 8.1 | 9.5 | 24.5 | 25 | 10 |
| 02035 00 007 | 1/2 | 3/4 | 9.6 | 11 | 28 | 34 | 10 |



Temperature

min

- 20 °C

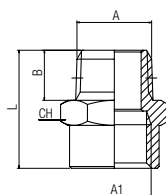
max

+ 80 °C

2040

RIDUZIONE CONICA

REDUCER (TAPER)
 VERGRÖßERUNG KONISCH
 GROSSISSEUR, CONIQUE
 UNIÓN CÓNICA MACHO - HEMBRA
 REDUÇÃO COM ROSCA CÔNICA

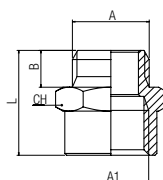


| Code | A | A1 | B | L | CH | Pack. |
|-------------------|-----|-----|------|------|----|-------|
| 02040 00 01 2W NB | 1/8 | 1/8 | 7.5 | 20 | 14 | 10 |
| 02040 00 01 AT NB | 1/8 | 1/4 | 7.5 | 22 | 17 | 10 |
| 02040 00 01 3W NB | 1/8 | 3/8 | 7.5 | 23 | 22 | 10 |
| 02040 00 01 6W NB | 1/4 | 1/4 | 11 | 26 | 17 | 10 |
| 02040 00 01 7W NB | 1/4 | 3/8 | 11 | 27 | 22 | 10 |
| 02040 00 01 8W NB | 1/4 | 1/2 | 11 | 30 | 26 | 10 |
| 02040 00 01 AB NB | 3/8 | 3/8 | 11.5 | 27.5 | 22 | 10 |
| 02040 00 01 AC NB | 3/8 | 1/2 | 11.5 | 30.5 | 26 | 10 |
| 02040 00 01 AL NB | 3/8 | 3/4 | 11.5 | 32.5 | 32 | 10 |
| 02040 00 01 AG NB | 1/2 | 1/2 | 14 | 33 | 26 | 10 |
| 02040 00 01 AH NB | 1/2 | 3/4 | 14 | 35 | 32 | 10 |
| 02040 00 01 AS NB | 3/4 | 1" | 16.5 | 41 | 41 | 10 |

2050

RIDUZIONE CILINDRICA

REDUCER (PARALLEL)
 VERGRÖßERUNG ZYLINDRISCH
 GROSSISSEUR, CYLINDRIQUE
 UNIÓN CILÍNDRICA MACHO - HEMBRA
 REDUÇÃO COM ROSCA PARALELA



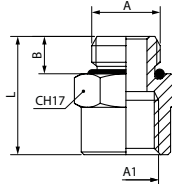
| Code | A | A1 | B | L | CH | Pack. |
|-------------------|-----|-----|----|------|----|-------|
| 02050 00 01 0W NB | M5 | 1/8 | 4 | 14.5 | 14 | 10 |
| 02050 00 01 2W NB | 1/8 | 1/8 | 6 | 17 | 14 | 10 |
| 02050 00 01 AT NB | 1/8 | 1/4 | 6 | 20.5 | 17 | 10 |
| 02050 00 01 3W NB | 1/8 | 3/8 | 6 | 21.5 | 22 | 10 |
| 02050 00 01 6W NB | 1/4 | 1/4 | 8 | 22.5 | 17 | 10 |
| 02050 00 01 7W NB | 1/4 | 3/8 | 8 | 23.5 | 22 | 10 |
| 02050 00 01 8W NB | 1/4 | 1/2 | 8 | 26.5 | 26 | 10 |
| 02050 00 01 AB NB | 3/8 | 3/8 | 9 | 24.5 | 22 | 10 |
| 02050 00 01 AC NB | 3/8 | 1/2 | 9 | 27.5 | 26 | 10 |
| 02050 00 01 AL NB | 3/8 | 3/4 | 9 | 30 | 32 | 10 |
| 02050 00 01 AG NB | 1/2 | 1/2 | 10 | 28.5 | 26 | 10 |
| 02050 00 01 AH NB | 1/2 | 3/4 | 10 | 31 | 32 | 10 |

2055

New

RIDUZIONE CILINDRICA CON O-RING NBR

REDUCER (PARALLEL) WITH NBR O-RING
 VERGRÖßERUNG ZYLINDRISCH MIT NBR O-RING
 GROSSISSEUR, CYLINDRIQUE AVEC JOINT TORIQUE NBR
 UNIÓN CILÍNDRICA MACHO - HEMBRA CON TORICA NBR
 REDUÇÃO COM ROSCA PARALELA E O-RING NBR



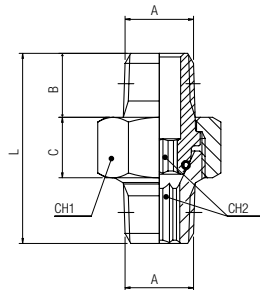
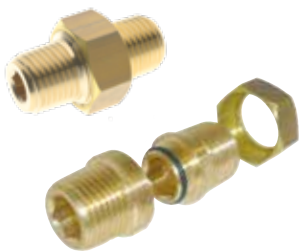
| Code | A | A1 | B | L | CH | Pack. |
|--------------|-----|-----|-----|------|----|-------|
| 02055 00 001 | M5 | 1/8 | 3.6 | 14.5 | 14 | 10 |
| 02055 00 002 | 1/8 | 1/8 | 5.4 | 17 | 14 | 10 |
| 02055 00 003 | 1/8 | 1/4 | 5.4 | 20.5 | 17 | 10 |
| 02055 00 004 | 1/8 | 3/8 | 5.4 | 21.5 | 22 | 10 |
| 02055 00 005 | 1/4 | 1/4 | 7.1 | 22.5 | 17 | 10 |
| 02055 00 006 | 1/4 | 3/8 | 7.1 | 23.5 | 22 | 10 |
| 02055 00 007 | 1/4 | 1/2 | 7.1 | 26.5 | 26 | 10 |
| 02055 00 008 | 3/8 | 3/8 | 8.1 | 24.5 | 22 | 10 |
| 02055 00 009 | 3/8 | 1/2 | 8.1 | 27.5 | 26 | 10 |
| 02055 00 010 | 3/8 | 3/4 | 8.1 | 30 | 32 | 10 |
| 02055 00 011 | 1/2 | 1/2 | 9.6 | 29.5 | 26 | 10 |
| 02055 00 012 | 1/2 | 3/4 | 9.6 | 31 | 32 | 10 |

| | min | max |
|-------------|---------|---------|
| Temperature | - 20 °C | + 80 °C |

2060

NIPPLO CONICO ORIENTABILE (3 PEZZI)

TAPER NIPPLE (3 PIECES)
 DOPPELNIPPEL KONISCH EINSTELLBAR (3 STÜCK)
 MAMELON DOUBLE 3 PIÈCES
 MACHÓN CÓNICO ORIENTABLE (3 PIEZAS)
 NIPLE ORIENTÁVEL COM ROSCA CÔNICA (3 PARTES)



| Code | A | B | C | D | L | CH1 | CH2 | ★ | Pack. |
|--------------|-----|------|-----|------|------|-----|-----|----|-------|
| 02060 00 001 | 1/8 | 9 | 8.5 | 7.5 | 27 | 15 | 5 | 15 | 10 |
| 02060 00 002 | 1/4 | 11.5 | 9.5 | 11 | 33.5 | 19 | 6 | 15 | 10 |
| 02060 00 003 | 3/8 | 13 | 10 | 11.5 | 36.5 | 22 | 8 | 20 | 10 |
| 02060 00 004 | 1/2 | 16 | 12 | 14 | 45 | 27 | 12 | 20 | 10 |
| 02060 00 005 | 3/4 | 18 | 17 | 16.5 | 54 | 36 | 14 | 40 | 5 |
| 02060 00 006 | 1" | 21.5 | 20 | 19 | 65 | 46 | 19 | 40 | 1 |

Articolo non nichelato.
 Article not nichel-plated.
 Artikel nicht vernickelt.
 Article non nickelé.
 Artículo no niquelado.
 Item não niquelado.

★ Coppia di serraggio (Nm).
 Torque specifications (Nm).
 Angaben Drehmoment (Nm).
 Couple de serrage (Nm).
 Par de apriete (Nm).
 Torque de aperto (Nm).

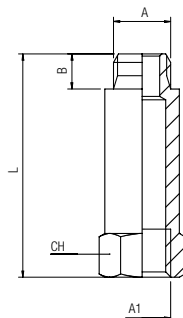
| | min | max |
|-------------|---------|---------|
| Temperature | - 20 °C | + 80 °C |

| | min | max |
|----------|----------------------------|---------------------|
| Pressure | - 0.99 bar (-0.099 MPa) | + 50 bar (5 MPa) |

2070

PROLUNGA CILINDRICA

EXTENSION (PARALLEL)
 VERLÄNGERUNG ZYLINDRISCH
 RALLONGE ÉGALE, CYLINDRIQUE
 PROLONGACIÓN CILÍNDRICA
 PROLONGAMENTO COM ROSCA PARALELA

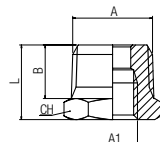


| Code | A | A1 | L | B | CH | Pack. |
|-------------------|-----|-----|------|----|----|-------|
| 02070 00 01 YN NB | M5 | M5 | 18.5 | 4 | 7 | 10 |
| 02070 00 01 BH NB | 1/8 | 1/8 | 22 | 6 | 14 | 10 |
| 02070 00 01 UP NB | 1/8 | 1/8 | 32 | 6 | 14 | 10 |
| 02070 00 01 BI NB | 1/8 | 1/8 | 42 | 6 | 14 | 10 |
| 02070 00 01 UQ NB | 1/8 | 1/8 | 51 | 6 | 14 | 10 |
| 02070 00 01 UR NB | 1/4 | 1/4 | 28 | 8 | 17 | 10 |
| 02070 00 01 BL NB | 1/4 | 1/4 | 35 | 8 | 17 | 10 |
| 02070 00 01 BM NB | 1/4 | 1/4 | 51 | 8 | 17 | 10 |
| 02070 00 01 UT NB | 3/8 | 3/8 | 32 | 9 | 22 | 10 |
| 02070 00 01 US NB | 1/2 | 1/2 | 35 | 10 | 26 | 10 |

2080

RIDUZIONE CONICA

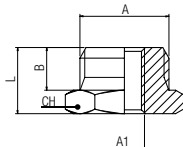
REDUCER (TAPER)
 REDUZIERUNG KONISCH
 RÉDUCTION, CONIQUE
 REDUCCIÓN CÓNICA
 REDUÇÃO COM ROSCA CÔNICA



| Code | A | A1 | B | L | CH | Pack. |
|-------------------|-------|-----|------|------|----|-------|
| 02080 00 01 5W NB | 1/4 | 1/8 | 11 | 16 | 14 | 10 |
| 02080 00 01 9W NB | 3/8 | 1/8 | 11.5 | 16.5 | 17 | 10 |
| 02080 00 01 AD NB | 1/2 | 1/8 | 14 | 19.5 | 22 | 10 |
| 02080 00 01 AA NB | 3/8 | 1/4 | 11.5 | 16.5 | 17 | 10 |
| 02080 00 01 AE NB | 1/2 | 1/4 | 14 | 19.5 | 22 | 10 |
| 02080 00 01 AF NB | 1/2 | 3/8 | 14 | 19.5 | 22 | 10 |
| 02080 00 01 AL NB | 3/4 | 3/8 | 16.5 | 23.5 | 27 | 10 |
| 02080 00 01 AM NB | 3/4 | 1/2 | 16.5 | 23.5 | 27 | 10 |
| 02080 00 01 AP NT | 1" | 1/2 | 19 | 27.5 | 34 | 10 |
| 02080 00 01 AQ NT | 1" | 3/4 | 19 | 27.5 | 34 | 10 |
| 02080 00 01 AR NT | 1"1/4 | 1/2 | 22 | 31 | 45 | 10 |
| 02080 00 01 AU NT | 1"1/4 | 3/4 | 22 | 31 | 45 | 10 |
| 02080 00 01 AV NT | 1"1/4 | 1" | 22 | 31 | 45 | 10 |
| 02080 00 01 82 NT | 1"1/2 | 1" | 22 | 32 | 50 | 5 |
| 02080 00 01 83 NT | 2" | 1" | 24 | 36 | 60 | 5 |

2090

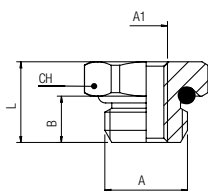
RIDUZIONE CILINDRICA
 REDUCER (PARALLEL)
 REDUZIERUNG ZYLINDRISCH
 RÉDUCTION, CYLINDRIQUE
 REDUCCIÓN CILÍNDRICA
 REDUÇÃO COM ROSCA PARALELA



| Code | A | A1 | B | L | CH | Pack. |
|-------------------|-----|-----|----|------|----|-------|
| 02090 00 01 YP NB | M5 | M3 | 4 | 6.5 | 7 | 10 |
| 02090 00 01 OW NT | 1/8 | M5 | 6 | 10.5 | 14 | 10 |
| 02090 00 01 4W NB | 1/4 | M5 | 8 | 13 | 17 | 10 |
| 02090 00 01 5W NT | 1/4 | 1/8 | 8 | 13 | 17 | 10 |
| 02090 00 01 9W NT | 3/8 | 1/8 | 9 | 14 | 19 | 10 |
| 02090 00 01 AD NT | 1/2 | 1/8 | 10 | 15.5 | 24 | 10 |
| 02090 00 01 AA NT | 3/8 | 1/4 | 9 | 14 | 19 | 10 |
| 02090 00 01 AE NT | 1/2 | 1/4 | 10 | 15.5 | 24 | 10 |
| 02090 00 01 AF NT | 1/2 | 3/8 | 10 | 15.5 | 24 | 10 |
| 02090 00 01 ED NB | 3/4 | 1/4 | 12 | 17.5 | 30 | 10 |
| 02090 00 01 AL NT | 3/4 | 3/8 | 12 | 17.5 | 30 | 10 |
| 02090 00 01 AM NT | 3/4 | 1/2 | 12 | 17.5 | 30 | 10 |
| 02090 00 01 AP NB | 1" | 1/2 | 12 | 20 | 40 | 10 |
| 02090 00 01 AQ NB | 1" | 3/4 | 12 | 20 | 40 | 10 |

2092

RIDUZIONE CILINDRICA CON O-RING NBR
 REDUCER (PARALLEL) WITH NBR O-RING
 REDUZIERUNG ZYLINDRISCH MIT NBR O-RING
 RÉDUCTION CYLINDRIQUE AVEC JOINT TORIQUE NBR
 REDUCCIÓN CILÍNDRICA CON TORICA NBR
 REDUÇÃO COM ROSCA PARALELA COM ROSCA PARALELA E O-RING NBR



| Code | A | A1 | B | L | CH | R | C | Pack. |
|--------------|-----|-----|------|------|----|-----|-----|-------|
| 02092 00 012 | M7 | M5 | 4.8 | 12 | 10 | 4 | 0.8 | 10 |
| 02092 00 001 | 1/8 | M5 | 5.4 | 9.4 | 13 | 8 | 3 | 10 |
| 02092 00 008 | 1/4 | M5 | 7.1 | 11.1 | 16 | 20 | 6 | 10 |
| 02092 00 002 | 1/4 | 1/8 | 7.1 | 11.1 | 16 | 20 | 6 | 10 |
| 02092 00 003 | 3/8 | 1/8 | 8.1 | 12.6 | 20 | 70 | 10 | 10 |
| 02092 00 004 | 3/8 | 1/4 | 8.1 | 12.6 | 20 | 40 | 9 | 10 |
| 02092 00 009 | 1/2 | 1/8 | 9.6 | 14.5 | 25 | 130 | 12 | 10 |
| 02092 00 005 | 1/2 | 1/4 | 9.6 | 14.6 | 25 | 130 | 12 | 10 |
| 02092 00 006 | 1/2 | 3/8 | 9.6 | 14.6 | 25 | 110 | 12 | 10 |
| 02092 00 010 | 3/4 | 1/4 | 11.1 | 16 | 34 | 130 | 12 | 10 |
| 02092 00 011 | 3/4 | 3/8 | 11.1 | 16 | 34 | 130 | 12 | 10 |
| 02092 00 007 | 3/4 | 1/2 | 11.1 | 16 | 34 | 110 | 12 | 10 |

R = Coppia di rottura (Nm)
 Breaking Torque (Nm)
 Abscherdrehmoment (Nm)
 Couple de Rupture (Nm)
 Par de Ruptura (Nm)
 Torque de Ruptura (Nm)

C = Coppia consigliata (Nm)
 Recommended Torque (Nm)
 Empfohlenes Drehmoment (Nm)
 Couple de Serrage (Nm)
 Par Aconsejado (Nm)
 Torque Recomendado (Nm)

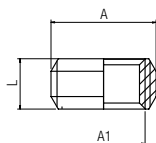


Temperature

min - 20 °C
 max + 80 °C

2095

RIDUZIONE CILINDRICA
 REDUCER (PARALLEL)
 REDUZIERUNG ZYLINDRISCH
 RÉDUCTION, CYLINDRIQUE
 REDUCCIÓN CILÍNDRICA
 REDUÇÃO COM ROSCA PARALELA

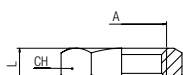


| Code | A | A1 | L | Pack. |
|-------------------|-----|-----|----|-------|
| 02095 00 01 5W 00 | 1/4 | 1/8 | 8 | 10 |
| 02095 00 01 AA 00 | 3/8 | 1/4 | 9 | 10 |
| 02095 00 01 AF 00 | 1/2 | 3/8 | 10 | 10 |
| 02095 00 01 AM 00 | 3/4 | 1/2 | 14 | 10 |
| 02095 00 01 AQ 00 | 1" | 3/4 | 20 | 10 |

Articolo non nichelato.
 Article not nichel-plated.
 Artikel nicht vernickelt.
 Article non nickelé.
 Artículo no niquelado.
 Item não niquelado.

2096

GHIERA
 NUT
 MUTTER
 ÉCROU
 TUERCA
 PORCA

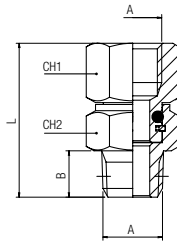


| Code | A | L | CH | Pack. |
|-------------------|-----|-----|----|-------|
| 02096 00 01 02 NB | 1/8 | 4.5 | 14 | 50 |
| 02096 00 01 03 NB | 1/4 | 5 | 17 | 50 |
| 02096 00 01 04 NB | 3/8 | 6 | 20 | 50 |
| 02096 00 01 05 NB | 1/2 | 6 | 24 | 50 |

2110

NIPPLO CONICO ORIENTABILE

ORIENTING NIPPLE (TAPER)
SCHWENKNIPPEL KONISCH
MAMELON ORIENTABLE, CONIQUE
UNIÓN CÓNICA ORIENTABLE
NIPLE ORIENTÁVEL COM ROSCA CÔNICA



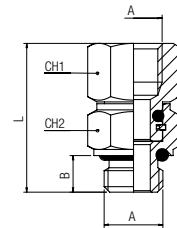
| Code | A | B | CH1 | CH2 | L | Pack. |
|--------------|-----|------|-----|-----|------|-------|
| 02110 00 001 | 1/8 | 7.5 | 13 | 13 | 25 | 10 |
| 02110 00 002 | 1/4 | 11 | 16 | 15 | 33 | 10 |
| 02110 00 003 | 3/8 | 11.5 | 20 | 17 | 35.5 | 10 |

| | min | max |
|-------------|----------------------------|-----------------------|
| Temperature | - 20 °C | + 80 °C |
| Pressure | - 0.99 bar (-0.099 MPa) | + 15 bar (1.5 MPa) |

2115

NIPPLO CILINDRICO ORIENTABILE

ORIENTING NIPPLE (PARALLEL)
SCHWENKNIPPEL ZYLINDRISCH
MAMELON ORIENTABLE, CYLINDRIQUE
UNIÓN CILÍNDRICA ORIENTABLE CON TÓRICA
NIPLE ORIENTÁVEL COM ROSCA PARALELA



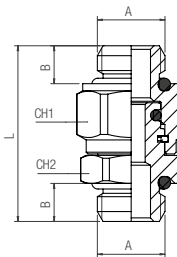
| Code | A | B | CH1 | CH2 | L | Pack. |
|--------------|-----|---|-----|-----|------|-------|
| 02115 00 001 | 1/8 | 6 | 13 | 13 | 24.5 | 10 |
| 02115 00 002 | 1/4 | 8 | 16 | 16 | 31 | 10 |
| 02115 00 003 | 3/8 | 9 | 20 | 18 | 34.5 | 10 |

| | min | max |
|-------------|----------------------------|-----------------------|
| Temperature | - 20 °C | + 80 °C |
| Pressure | - 0.99 bar (-0.099 MPa) | + 15 bar (1.5 MPa) |

2116

NIPPLO MASCHIO CILINDRICO ORIENTABILE CON OR

MALE ORIENTING NIPPLE WITH OR (PARALLEL)
DOPPELNIPPEL ZYLINDRISCH EINSTELLBAR
MAMELON DOUBLE ORIENTABLE BSPP AVEC JOINT TORIQUE
UNIÓN MACHO CILÍNDRICO ORIENTABLE CON OR
NIPLE MACHO ROSCA PARALELA ORIENTÁVEL COM O-RING



| Code | A | B | L | CH1 | CH2 | Pack. |
|--------------|-----|-----|------|-----|-----|-------|
| 02116 GI 001 | 1/8 | 5.5 | 25 | 14 | 13 | 10 |
| 02116 GI 002 | 1/4 | 7 | 29 | 17 | 16 | 10 |
| 02116 GI 003 | 3/8 | 8 | 33 | 20 | 20 | 10 |
| 02116 GI 004 | 1/2 | 9.5 | 37 | 25 | 25 | 10 |
| 02116 GI 005 | 3/4 | 11 | 48.5 | 34 | 34 | 10 |
| 02116 GI 006 | 1" | 12 | 52 | 40 | 40 | 10 |

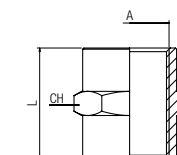
Articolo non nichelato.
Article not nichel-plated.
Artikel nicht vernickelt.
Article non nickelé.
Artículo no niquelado.
Item não niquelado.

| | min | max |
|-------------|----------------------------|-----------------------|
| Temperature | - 20 °C | + 80 °C |
| Pressure | - 0.99 bar (-0.099 MPa) | + 15 bar (1.5 MPa) |

3000

MANICOTTO

SLEEVE
MUFFE
MANCHON
MANGUITO
LUVÁ

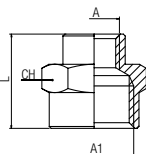


| Code | A | L | CH | Pack. |
|-----------------------|---|----|----|-------|
| 03000 00 01 B5 NB M5 | | 11 | 8 | 10 |
| 03000 00 01 02 NB 1/8 | | 15 | 14 | 10 |
| 03000 00 01 03 NB 1/4 | | 22 | 17 | 10 |
| 03000 00 01 04 NB 3/8 | | 24 | 22 | 10 |
| 03000 00 01 05 NB 1/2 | | 30 | 26 | 10 |
| 03000 00 01 07 NB 3/4 | | 32 | 32 | 10 |
| 03000 00 01 09 NB 1" | | 46 | 40 | 10 |

3010

MANICOTTO DI RIDUZIONE

REDUCING SLEEVE
MUFFE REDUZIERT
MANCHON INÉGAL
MANGUITO DE REDUCCIÓN
LUAVA DE REDUÇÃO

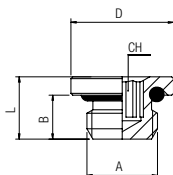


| Code | A | A1 | L | CH | Pack. |
|-------------------|-----|-----|------|----|-------|
| 03010 00 01 0W NB | M5 | 1/8 | 13 | 14 | 10 |
| 03010 00 01 AT NB | 1/8 | 1/4 | 19 | 17 | 10 |
| 03010 00 01 3W NB | 1/8 | 3/8 | 20 | 22 | 10 |
| 03010 00 01 4W NB | 1/8 | 1/2 | 24 | 24 | 10 |
| 03010 00 01 7W NB | 1/4 | 3/8 | 23 | 22 | 10 |
| 03010 00 01 8W NB | 1/4 | 1/2 | 25 | 24 | 10 |
| 03010 00 01 AC NB | 3/8 | 1/2 | 27.5 | 24 | 10 |
| 03010 00 01 AH NB | 1/2 | 3/4 | 30 | 30 | 10 |
| 03010 00 01 AI NB | 1/2 | 1" | 39 | 40 | 10 |
| 03010 00 01 AS NB | 3/4 | 1" | 41 | 40 | 10 |

3015

TAPPO MASCHIO CILINDRICO ESAGONO INCASSATO CON O-RING NBR

MALE PLUG (PARALLEL) WITH HEXAGON EMBEDDED AND NBR O-RING
GEWINDESTOPFEN ZYLINDRISCH INNENSECHSKANT MIT O-RING NBR
BOUCHON À 6 PANS CREUX MÂLE, CYLINDRIQUE AVEC JOINT NBR
TAPÓN MACHO CILÍNDRICO HEXÁGONO INTERIOR CON TÓRICA NBR
TAMPÃO MACHO COM ROSCA PARALELA E SEXTAVADO INTERNO (O-RING EM NBR)



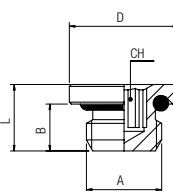
| Code | A | B | L | D | CH | Pack. |
|--------------|----------|------|------|-----|----|-------|
| 03015 00 005 | M5 | 4 | 6 | 8 | 2 | 10 |
| 03015 00 011 | M7x1 | 5 | 7.5 | 9.5 | 3 | 10 |
| 03015 00 006 | M8x1 | 5.4 | 8 | 12 | 4 | 10 |
| 03015 00 007 | M10x1 | 6 | 8.5 | 14 | 5 | 10 |
| 03015 00 001 | 1/8 | 6 | 8.5 | 14 | 5 | 10 |
| 03015 00 002 | 1/4 | 8 | 11 | 17 | 6 | 10 |
| 03015 00 008 | M12x1.25 | 8 | 11 | 15 | 6 | 10 |
| 03015 00 003 | 3/8 | 9 | 12.5 | 20 | 8 | 10 |
| 03015 00 004 | 1/2 | 10 | 13.5 | 25 | 10 | 10 |
| 03015 00 009 | 3/4 | 11.1 | 15.5 | 34 | 17 | 10 |
| 03015 00 010 | 1" | 11.8 | 16 | 38 | 19 | 10 |

| | min | max |
|-------------|---------|---------|
| Temperature | - 20 °C | + 80 °C |

3015V

TAPPO MASCHIO CILINDRICO ESAGONO INCASSATO CON O-RING FKM

MALE PLUG (PARALLEL) WITH HEXAGON EMBEDDED AND FKM O-RING
GEWINDESTOPFEN ZYLINDRISCH INNENSECHSKANT MIT O-RING FKM
BOUCHON À 6 PANS CREUX MÂLE, CYLINDRIQUE AVEC JOINT FKM
TAPÓN MACHO CILÍNDRICO HEXÁGONO INTERIOR CON TÓRICA FKM
TAMPÃO MACHO COM ROSCA PARALELA E SEXTAVADO INTERNO (O-RING EM FKM)



| Code | A | B | L | D | CH | Pack. |
|--------------|-----|----|------|----|----|-------|
| 03015 V0 005 | M5 | 4 | 6 | 8 | 2 | 10 |
| 03015 V0 001 | 1/8 | 6 | 8.5 | 14 | 5 | 10 |
| 03015 V0 002 | 1/4 | 8 | 11 | 17 | 6 | 10 |
| 03015 V0 003 | 3/8 | 9 | 12.5 | 20 | 8 | 10 |
| 03015 V0 004 | 1/2 | 10 | 13.5 | 25 | 10 | 10 |

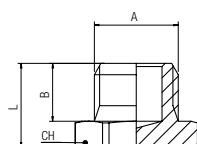
| | min | max |
|-------------|---------|----------|
| Temperature | - 15 °C | + 200 °C |

EPDM Guarnizioni EPDM a richiesta - EPDM Seals are available upon request - Auf Anfrage EPDM O-Ring Dichtung - Joint EPDM en sur demande - Bajo EPDM demanda Junta - Vedação EPDM de sob encomenda

3020

TAPPO MASCHIO CILINDRICO

MALE PLUG (PARALLEL)
GEWINDESTOPFEN ZYLINDRISCH
BOUCHON À 6 PANS MÂLE, CYLINDRIQUE
TAPÓN MACHO CILÍNDRICO
TAMPÃO MACHO COM ROSCA PARALELA



| Code | A | B | L | CH | Pack. |
|-------------------|----------|-----|------|----|-------|
| 03020 00 01 B5 NB | *M5 | 4.5 | 8 | 8 | 10 |
| 03020 00 01 B8 NB | M6x1 | 4.5 | 8 | 10 | 10 |
| 03020 00 01 NQ NB | M8x1.25 | 5.4 | 9.4 | 12 | 10 |
| 03020 00 01 JG NB | M10x1 | 5.4 | 9.4 | 14 | 10 |
| 03020 00 01 02 NB | 1/8 | 6.5 | 10 | 14 | 10 |
| 03020 00 01 03 NB | 1/4 | 9 | 13 | 17 | 10 |
| 03020 00 01 RL NB | M12x1 | 8 | 12 | 16 | 10 |
| 03020 00 01 D5 NB | M12x1.25 | 9 | 13 | 16 | 10 |
| 03020 00 01 04 NB | 3/8 | 9.5 | 13.5 | 19 | 10 |
| 03020 00 01 05 NB | 1/2 | 10 | 14.5 | 24 | 10 |
| 03020 00 01 07 NB | 3/4 | 11 | 16 | 30 | 10 |
| 03020 00 01 09 NB | 1" | 12 | 17 | 40 | 10 |

* Installabile anche con cacciavite
Can be also installed with a screwdriver
Kann auch mit einem Schraubendreher angebracht werden
Peut être installé avec un tournevis
Se puede instalar con destornillador
Pode ser instalado com chave de fenda

3021

TAPPO MASCHIO CONICO

MALE PLUG (TAPER)
 GEWINDESTOPFEN KONISCH
 BOUCHON À 6 PANS MÂLE, CÔNIQUE
 TAPÓN MACHO CÓNICO
 TAMPÃO MACHO CÔNICA



| Code | A | B | L | CH | Pack. |
|-----------------------|------|------|----|----|-------|
| 03021 00 01 02 NB 1/8 | 7.5 | 11 | 10 | 10 | |
| 03021 00 01 03 NB 1/4 | 11 | 15 | 14 | 10 | |
| 03021 00 01 04 NB 3/8 | 11.5 | 15.5 | 17 | 10 | |
| 03021 00 01 05 NB 1/2 | 14 | 18.5 | 22 | 10 | |
| 03021 00 01 07 NB 3/4 | 16.5 | 21.5 | 27 | 10 | |
| 03021 00 01 09 NB 1" | 19 | 25 | 34 | 10 | |

3025

TAPPO MASCHIO CONICO

MALE PLUG (TAPER)
 GEWINDESTOPFEN KONISCH
 BOUCHON À 6 PANS CREUX, CONIQUE
 TAPÓN MACHO CÓNICO HEXÁGONO INTERIOR
 TAMPÃO MACHO COM ROSCA CÔNICA

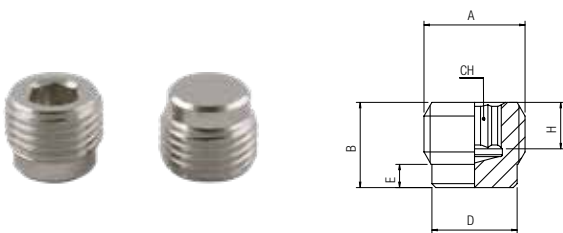


| Code | A | B | H | CH | Pack. |
|-----------------------|-----|---|----|----|-------|
| 03025 00 01 02 NB 1/8 | 7.5 | 5 | 5 | 10 | |
| 03025 00 01 03 NB 1/4 | 10 | 7 | 6 | 10 | |
| 03025 00 01 04 NB 3/8 | 11 | 7 | 8 | 10 | |
| 03025 00 01 05 NB 1/2 | 13 | 8 | 10 | 10 | |

3026

TAPPO MASCHIO CILINDRICO

MALE PLUG (PARALLEL)
 GEWINDESTOPFEN ZYLINDRISCH
 BOUCHON À 6 PANS CREUX, CYLINDRIQUE
 TAPÓN MACHO CILÍNDRICO HEXÁGONO INTERIOR
 TAMPÃO MACHO COM ROSCA PARALELA



| Code | A | B | D | E | H | CH | Pack. |
|-----------------------|------|------|-----|-----|----|----|-------|
| 03026 00 01 02 NB 1/8 | 8 | 8 | 2 | 5 | 5 | 10 | |
| 03026 00 01 03 NB 1/4 | 11 | 11 | 3 | 7 | 6 | 10 | |
| 03026 00 01 04 NB 3/8 | 12.5 | 14.5 | 3.5 | 8.5 | 8 | 10 | |
| 03026 00 01 05 NB 1/2 | 14 | 18 | 4 | 10 | 10 | 10 | |
| 03026 00 01 07 NB 3/4 | 14 | 21.5 | 3 | 10 | 12 | 10 | |

3030

TAPPO FEMMINA

FEMALE PLUG
 STOPFEN INNENGEW.
 BOUCHON FEMELLE
 TAPÓN HEMBRA
 TAMPÃO COM ROSCA FÊMEA



| Code | A | B | L | CH | Pack. |
|-----------------------|------|----|----|----|-------|
| 03030 00 01 02 NB 1/8 | 7.5 | 11 | 12 | 10 | |
| 03030 00 01 03 NB 1/4 | 11 | 19 | 14 | 10 | |
| 03030 00 01 04 NB 3/8 | 11.5 | 20 | 17 | 10 | |
| 03030 00 01 05 NB 1/2 | 14 | 22 | 19 | 10 | |

3040

PORTAGOMMA MASCHIO CONICO

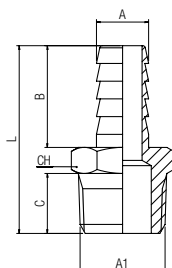
MALE HOSE ADAPTER (TAPER)

SCHLAUCHTÜLLE AUSSENGEW. KONISCH

DOUILLE ANNELÉE, CONIQUE

ESPIGA MACHO CÔNICA

ESPIGÃO COM ROSCA MACHO CÔNICA

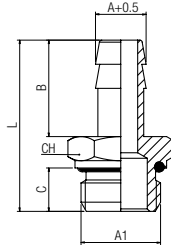


| Code | A | A1 | B | C | L | CH | Pack. |
|-------------------|----|-----|------|------|------|----|-------|
| 03040 00 01 BQ NB | 4 | 1/8 | 19.5 | 7.5 | 32 | 12 | 10 |
| 03040 00 01 BS NB | 6 | 1/8 | 19.5 | 7.5 | 32 | 12 | 10 |
| 03040 00 01 BT NB | 6 | 1/4 | 19.5 | 11 | 35.5 | 14 | 10 |
| 03040 00 01 BZ NB | 7 | 1/8 | 19.5 | 7.5 | 32 | 12 | 10 |
| 03040 00 01 BX NB | 7 | 1/4 | 19.5 | 11 | 35.5 | 14 | 10 |
| 03040 00 01 BY NB | 8 | 1/8 | 19.5 | 7.5 | 32 | 12 | 10 |
| 03040 00 01 BJ NB | 8 | 1/4 | 19.5 | 11 | 35.5 | 14 | 10 |
| 03040 00 01 BK NB | 8 | 3/8 | 19.5 | 11.5 | 36 | 17 | 10 |
| 03040 00 01 CA NB | 9 | 1/8 | 19.5 | 7.5 | 32 | 12 | 10 |
| 03040 00 01 CB NB | 9 | 1/4 | 19.5 | 11 | 35.5 | 14 | 10 |
| 03040 00 01 CC NB | 9 | 3/8 | 19.5 | 11.5 | 36 | 17 | 10 |
| 03040 00 01 CD NB | 9 | 1/2 | 19.5 | 14 | 39 | 22 | 10 |
| 03040 00 01 CE NB | 10 | 1/8 | 19.5 | 7.5 | 32 | 12 | 10 |
| 03040 00 01 CF NB | 10 | 1/4 | 19.5 | 11 | 35.5 | 14 | 10 |
| 03040 00 01 CG NB | 10 | 3/8 | 19.5 | 11.5 | 36 | 17 | 10 |
| 03040 00 01 CH NB | 10 | 1/2 | 19.5 | 14 | 39 | 22 | 10 |
| 03040 00 01 VB NB | 11 | 1/8 | 19.5 | 7.5 | 32 | 12 | 10 |
| 03040 00 01 RP NB | 11 | 1/4 | 19.5 | 11 | 35.5 | 14 | 10 |
| 03040 00 01 QR NB | 11 | 3/8 | 19.5 | 11.5 | 36 | 17 | 10 |
| 03040 00 01 VF NB | 11 | 1/2 | 19.5 | 14 | 39 | 17 | 10 |
| 03040 00 01 CI NB | 12 | 1/4 | 19.5 | 11 | 35.5 | 14 | 10 |
| 03040 00 01 CL NB | 12 | 3/8 | 19.5 | 11.5 | 36 | 17 | 10 |
| 03040 00 01 CM NB | 12 | 1/2 | 19.5 | 14 | 39 | 22 | 10 |
| 03040 00 01 CN NB | 14 | 3/8 | 19.5 | 11.5 | 36 | 17 | 10 |
| 03040 00 01 DB NB | 14 | 1/2 | 19.5 | 14 | 39 | 22 | 10 |
| 03040 00 01 5P NB | 15 | 1/4 | 19.5 | 11 | 35.5 | 22 | 10 |
| 03040 00 01 1G NB | 15 | 3/8 | 19.5 | 11.5 | 36 | 17 | 10 |
| 03040 00 01 CP NB | 15 | 1/2 | 19.5 | 14 | 39 | 22 | 10 |
| 03040 00 01 VG NB | 15 | 3/4 | 19.5 | 14.5 | 43.5 | 27 | 10 |
| 03040 00 01 CQ NB | 16 | 3/8 | 19.5 | 11.5 | 36 | 17 | 10 |
| 03040 00 01 CR NB | 16 | 1/2 | 19.5 | 14 | 39 | 22 | 10 |
| 03040 00 01 CS NB | 16 | 3/4 | 19.5 | 16.5 | 43.5 | 27 | 10 |
| 03040 00 01 CT NB | 17 | 3/8 | 19.5 | 11.5 | 36 | 18 | 10 |
| 03040 00 01 CU NB | 17 | 1/2 | 19.5 | 14 | 39 | 22 | 10 |
| 03040 00 01 CV NB | 18 | 3/8 | 19.5 | 11.5 | 36 | 19 | 10 |
| 03040 00 01 CZ NB | 18 | 1/2 | 19.5 | 14 | 39 | 22 | 10 |
| 03040 00 01 CX NB | 18 | 3/4 | 19.5 | 16.5 | 43.5 | 27 | 10 |
| 03040 00 01 R7 NB | 20 | 3/8 | 19.5 | 11.5 | 36 | 21 | 10 |
| 03040 00 01 C1 NB | 20 | 1/2 | 30 | 14 | 49.5 | 22 | 10 |
| 03040 00 01 R8 NB | 20 | 3/4 | 30 | 13.5 | 50.5 | 27 | 10 |
| 03040 00 01 VC NB | 21 | 3/8 | 30 | 11.5 | 47.5 | 22 | 10 |
| 03040 00 01 VH NB | 21 | 1/2 | 30 | 14 | 49.5 | 22 | 10 |
| 03040 00 01 VI NB | 21 | 3/4 | 30 | 14.5 | 54 | 27 | 10 |
| 03040 00 01 C4 NB | 25 | 3/4 | 30 | 14.5 | 51.5 | 27 | 10 |
| 03040 00 01 DL NB | 25 | 1" | 30 | 16 | 53.5 | 34 | 10 |
| 03040 00 01 VD NB | 27 | 3/4 | 30 | 14.5 | 52.5 | 28 | 10 |
| 03040 00 01 UL NB | 27 | 1" | 30 | 16 | 53.5 | 34 | 10 |
| 03040 00 01 VE NB | 34 | 1" | 30 | 16 | 55 | 36 | 10 |

3044

PORTAGOMMA MASCHIO CILINDRICO CON O-RING

MALE HOSE ADAPTER (PARALLEL) WITH O-RING
 SCHLAUCHTÜLLE AUSSENGEW. ZYLINDRISCH MIT O-RING
 DOUILLE ANNELÉE, CYLINDRIQUE AVEC JOINT TORIQUE
 EPIGA MACHO CILÍNDRICA CON TÓRICA
 EPIGÃO COM ROSCA MACHO PARALELA E O-RING



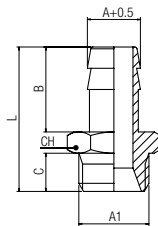
| Code | A | A1 | B | C | L | CH | Pack. |
|--------------|-----|-----|----|------|------|----|-------|
| 03044 00 001 | 4.5 | M5 | 15 | 4 | 24 | 8 | 10 |
| 03044 00 023 | 6 | 1/4 | 20 | 8 | 34.5 | 16 | 10 |
| 03044 00 002 | 7 | 1/8 | 20 | 6 | 31 | 13 | 10 |
| 03044 00 003 | 7 | 1/4 | 20 | 8 | 34.5 | 16 | 10 |
| 03044 00 004 | 8 | 1/8 | 20 | 6 | 31 | 13 | 10 |
| 03044 00 005 | 8 | 1/4 | 20 | 8 | 34.5 | 16 | 10 |
| 03044 00 024 | 8 | 3/8 | 20 | 9 | 35.5 | 19 | 10 |
| 03044 00 015 | 8 | 1/2 | 20 | 10 | 37.5 | 24 | 10 |
| 03044 00 006 | 9 | 1/8 | 20 | 6 | 31 | 13 | 10 |
| 03044 00 007 | 9 | 1/4 | 20 | 8 | 34.5 | 16 | 10 |
| 03044 00 008 | 9 | 3/8 | 20 | 9 | 35.5 | 19 | 10 |
| 03044 00 025 | 10 | 1/4 | 20 | 8 | 34.5 | 16 | 10 |
| 03044 00 026 | 10 | 3/8 | 24 | 9 | 39.5 | 19 | 10 |
| 03044 00 027 | 10 | 1/2 | 22 | 10 | 39.5 | 24 | 10 |
| 03044 00 009 | 12 | 1/4 | 20 | 8 | 34.5 | 16 | 10 |
| 03044 00 010 | 12 | 3/8 | 20 | 9 | 35.5 | 19 | 10 |
| 03044 00 011 | 12 | 1/2 | 22 | 10 | 39.5 | 24 | 10 |
| 03044 00 016 | 13 | 1/2 | 22 | 10 | 39.5 | 24 | 10 |
| 03044 00 028 | 14 | 1/4 | 24 | 8 | 38.5 | 16 | 10 |
| 03044 00 020 | 14 | 3/8 | 24 | 9 | 39.5 | 19 | 10 |
| 03044 00 021 | 14 | 1/2 | 24 | 10 | 41.5 | 24 | 10 |
| 03044 00 012 | 17 | 3/8 | 24 | 9 | 39.5 | 19 | 10 |
| 03044 00 013 | 17 | 1/2 | 24 | 10 | 41.5 | 24 | 10 |
| 03044 00 017 | 19 | 3/4 | 30 | 11.1 | 49 | 33 | 10 |
| 03044 00 022 | 20 | 3/4 | 35 | 11 | 54 | 33 | 10 |
| 03044 00 018 | 25 | 1" | 30 | 11.8 | 49.7 | 37 | 10 |
| 03044 00 019 | 27 | 1" | 30 | 11.8 | 49.7 | 37 | 10 |

| | min | max |
|-------------|---------|---------|
| Temperature | - 20 °C | + 80 °C |

3045

PORTAGOMMA MASCHIO CILINDRICO

MALE HOSE ADAPTER (PARALLEL)
 SCHLAUCHTÜLLE AUSSENGEW. ZYLINDRISCH
 DOUILLE ANNELÉE, CYLINDRIQUE
 EPIGA MACHO CILÍNDRICA
 EPIGÃO COM ROSCA MACHO PARALELA

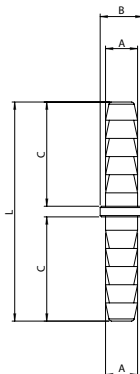


| Code | A | A1 | B | C | L | CH | Pack. |
|-------------------|-----|-----|-----|----|------|----|-------|
| 03045 00 01 6Q NB | 3 | M5 | 7.5 | 4 | 15.5 | 8 | 10 |
| 03045 00 01 BQ NB | 4 | 1/8 | 15 | 6 | 30 | 14 | 10 |
| 03045 00 01 8S NB | 4.5 | M5 | 15 | 4 | 23 | 8 | 10 |
| 03045 00 01 BS NB | 6 | 1/8 | 20 | 6 | 30 | 14 | 10 |
| 03045 00 01 BT NB | 6 | 1/4 | 20 | 8 | 33 | 17 | 10 |
| 03045 00 01 BZ NB | 7 | 1/8 | 20 | 6 | 30 | 14 | 10 |
| 03045 00 01 BX NB | 7 | 1/4 | 20 | 8 | 33 | 17 | 10 |
| 03045 00 01 BY NB | 8 | 1/8 | 20 | 6 | 30 | 14 | 10 |
| 03045 00 01 BJ NB | 8 | 1/4 | 20 | 8 | 33 | 17 | 10 |
| 03045 00 01 CA NB | 9 | 1/8 | 20 | 6 | 30 | 14 | 10 |
| 03045 00 01 CB NB | 9 | 1/4 | 20 | 8 | 33 | 17 | 10 |
| 03045 00 01 CC NB | 9 | 3/8 | 20 | 9 | 34 | 19 | 10 |
| 03045 00 01 CD NB | 9 | 1/2 | 20 | 10 | 35.5 | 24 | 10 |
| 03045 00 01 VB NB | 11 | 1/8 | 20 | 6 | 30 | 14 | 10 |
| 03045 00 01 RP NB | 11 | 1/4 | 20 | 8 | 33 | 17 | 10 |
| 03045 00 01 QR NB | 11 | 3/8 | 20 | 9 | 34 | 19 | 10 |
| 03045 00 01 VF NB | 11 | 1/2 | 20 | 20 | 35.5 | 24 | 10 |
| 03045 00 01 CI NB | 12 | 1/4 | 20 | 8 | 33 | 17 | 10 |
| 03045 00 01 CL NB | 12 | 3/8 | 20 | 9 | 34 | 19 | 10 |
| 03045 00 01 CM NB | 12 | 1/2 | 22 | 10 | 37.5 | 24 | 10 |
| 03045 00 01 5P NB | 15 | 1/4 | 20 | 8 | 33 | 17 | 10 |
| 03045 00 01 1G NB | 15 | 3/8 | 20 | 8 | 34 | 19 | 10 |
| 03045 00 01 CP NB | 15 | 1/2 | 22 | 10 | 37.5 | 24 | 10 |
| 03045 00 01 VG NB | 15 | 3/4 | 22 | 12 | 39.5 | 30 | 10 |
| 03045 00 01 CT NB | 17 | 3/8 | 24 | 9 | 38 | 19 | 10 |
| 03045 00 01 CU NB | 17 | 1/2 | 24 | 10 | 39.5 | 24 | 10 |
| 03045 00 01 TA NB | 19 | 3/4 | 24 | 12 | 41.5 | 30 | 10 |
| 03045 00 01 VI NB | 21 | 3/4 | 24 | 12 | 41.5 | 30 | 10 |

3047

PORTAGOMMA INTERMEDIO

STRAIGHT HOSE ADAPTOR
 VERBINDUNGSVERSCHRAUBUNG MIT SCHLAUCHTÜLLEN
 DOUILLE ANNELÉE DE JONCTION
 EPIGA DOBLE
 CONEXÃO ESPIGÃO RETA

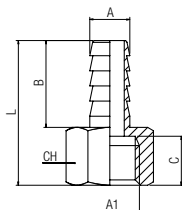


| Code | A | B | C | L | Pack. |
|-------------------|----|----|------|----|-------|
| 03047 00 01 X4 NB | 6 | 8 | 19.5 | 41 | 10 |
| 03047 00 01 X7 NB | 8 | 10 | 19.5 | 41 | 10 |
| 03047 00 01 X9 NB | 10 | 12 | 19.5 | 42 | 10 |
| 03047 00 01 Y1 NB | 12 | 14 | 19.5 | 42 | 10 |

3050

PORTAGOMMA FEMMINA

FEMALE HOSE ADAPTER
 SCHLAUCHTÜLLE INNENGEW.
 DOUILLE ANNELÉE FEMELLE
 EPIGA HEMBRA
 ESPIGÃO COM ROSCA FÊMEA

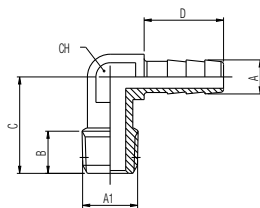


| Code | A | A1 | B | C | L | CH | Pack. |
|-------------------|----|-----|------|------|------|----|-------|
| 03050 00 01 BS NB | 6 | 1/8 | 19.5 | 8.5 | 30 | 14 | 10 |
| 03050 00 01 BT NB | 6 | 1/4 | 19.5 | 11 | 32.5 | 17 | 10 |
| 03050 00 01 BZ NB | 7 | 1/8 | 19.5 | 8.5 | 30 | 14 | 10 |
| 03050 00 01 BX NB | 7 | 1/4 | 19.5 | 11 | 32.5 | 17 | 10 |
| 03050 00 01 BJ NB | 8 | 1/4 | 19.5 | 11 | 32.5 | 17 | 10 |
| 03050 00 01 CB NB | 9 | 1/4 | 19.5 | 11 | 32.5 | 17 | 10 |
| 03050 00 01 CC NB | 9 | 3/8 | 19.5 | 11.5 | 33.5 | 20 | 10 |
| 03050 00 01 CF NB | 10 | 1/4 | 19.5 | 11 | 32.5 | 17 | 10 |
| 03050 00 01 CG NB | 10 | 3/8 | 19.5 | 11.5 | 33.5 | 20 | 10 |
| 03050 00 01 CL NB | 12 | 3/8 | 19.5 | 11.5 | 33.5 | 20 | 10 |
| 03050 00 01 CM NB | 12 | 1/2 | 19.5 | 14.5 | 37.5 | 24 | 10 |

3055

RACCORDO A L PORTAGOMMA MASCHIO

MALE HOSE ADAPTER ELBOW
 WINKELSCHLAUCHTÜLLE AUSSENGEW.
 DOUILLE ANNELÉE COUDÉE
 EPIGA A L MACHO
 ESPIGÃO EM "L" COM ROSCA MACHO

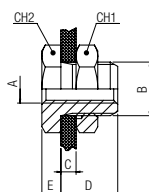


| Code | A | A1 | B | C | D | CH | Pack. |
|-------------------|---|-----|-----|----|----|----|-------|
| 03055 00 01 BS NB | 6 | 1/8 | 7.5 | 17 | 14 | 11 | 10 |
| 03055 00 01 BT NB | 6 | 1/4 | 11 | 22 | 14 | 11 | 10 |
| 03055 00 01 BZ NB | 7 | 1/8 | 7.5 | 17 | 14 | 11 | 10 |
| 03055 00 01 BX NB | 7 | 1/4 | 11 | 22 | 14 | 11 | 10 |
| 03055 00 01 CB NB | 9 | 1/4 | 11 | 22 | 14 | 11 | 10 |

3060

RACCORDO DI ATTRAVERSAMENTO

BULKHEAD CONNECTOR
 SCHOTTVERSCHRAUBUNG
 TRAVERSÉE DE CLOISON
 RACOR PASATABIQUES
 CONEXÃO PASSA-MURO

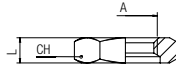


| Code | A | B | C max | D | E | CH1 | CH2 | Pack. |
|--------------|-----|---------|-------|------|-----|-----|-----|-------|
| 03060 00 001 | M5 | M10x1 | 7 | 10.5 | 3.5 | 14 | 14 | 10 |
| 03060 00 002 | 1/8 | M16x1.5 | 10 | 14 | 4 | 22 | 19 | 10 |
| 03060 00 003 | 1/4 | M20x1.5 | 16 | 21 | 4 | 27 | 24 | 10 |
| 03060 00 004 | 3/8 | M26x1.5 | 15 | 21 | 5 | 32 | 30 | 10 |
| 03060 00 005 | 1/2 | M28x1.5 | 21 | 27 | 6 | 36 | 32 | 10 |
| 03060 00 011 | 3/4 | M33x1.5 | 22.5 | 30.5 | 6 | 41 | 41 | 10 |

1704

GHIERA

NUT
MUTTER
ECROU
TUERCA PASATABIQUES
PORCA

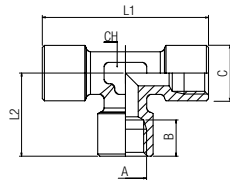


| Code | A | L | CH | Pack. |
|-------------------|---------|---|----|-------|
| 01704 00 01 C8 NB | M10x1 | 4 | 14 | 50 |
| 01704 00 01 E3 NB | M16x1.5 | 5 | 22 | 50 |
| 01704 00 01 F2 NB | M20x1.5 | 6 | 27 | 50 |
| 01704 00 01 0V NB | M26x1.5 | 7 | 32 | 50 |
| 01704 00 01 H1 NB | M28x1.5 | 7 | 36 | 50 |
| 01704 00 01 22 NB | M33x1.5 | 8 | 41 | 50 |

4000

RACCORDO A T FEMMINA

FEMALE TEE
T-VERSCHRAUBUNG INNENGEW.
TÉ ÉGAL FEMELLE
RACOR A T HEMBRA
CONEXÃO EM "T" COM ROSCA FÊMEA

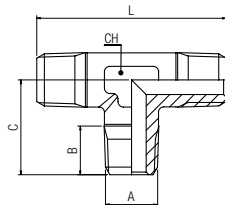


| Code | A | B | L2 | L1 | C | CH | Pack. |
|-------------------|-----|------|------|----|------|----|-------|
| 04000 00 01 02 NB | 1/8 | 8.5 | 19.5 | 39 | 13 | 12 | 10 |
| 04000 00 01 03 NB | 1/4 | 11 | 24.5 | 49 | 16.5 | 13 | 10 |
| 04000 00 01 04 NB | 3/8 | 12 | 27 | 54 | 20.5 | 16 | 10 |
| 04000 00 01 05 NB | 1/2 | 15 | 32 | 64 | 25.5 | 20 | 10 |
| 04000 00 01 07 NT | 3/4 | 16.5 | 36.5 | 73 | 32.5 | 27 | 10 |
| 04000 00 01 09 NT | 1" | 19 | 45 | 90 | 39.5 | 30 | 5 |

4010

RACCORDO A T MASCHIO

MALE TEE
T-VERSCHRAUBUNG AUSSENGEW.
TÉ ÉGAL MÂLE
RACOR A T MACHO
CONEXÃO EM "T" COM ROSCA MACHO

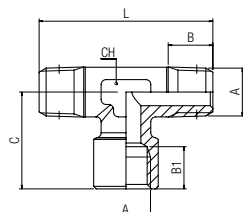


| Code | A | B | C | L | CH | Pack. |
|-------------------|-----|------|------|------|----|-------|
| 04010 00 01 02 NB | 1/8 | 8 | 17.5 | 35 | 12 | 10 |
| 04010 00 01 03 NB | 1/4 | 11 | 23 | 46 | 13 | 10 |
| 04010 00 01 04 NB | 3/8 | 11.5 | 25.5 | 51.5 | 16 | 10 |
| 04010 00 01 05 NB | 1/2 | 14 | 29.5 | 59 | 20 | 10 |
| 04010 00 01 07 NT | 3/4 | 14.5 | 32 | 64 | 27 | 10 |
| 04010 00 01 09 NT | 1" | 16.8 | 39 | 78 | 30 | 5 |

4020

RACCORDO A T FEMMINA CENTRALE

CENTRE LEG FEMALE TEE
T-VERSCHRAUBUNG INNENGEW. MITTIG
TÉ ÉGAL MÂLE, CENTRE FEMELLE
RACOR A T HEMBRA CENTRAL
CONEXÃO EM "T" COM ROSCA FÊMEA CENTRAL



| Code | A | B | B1 | C | L | CH | Pack. |
|-------------------|-----|------|------|------|----|----|-------|
| 04020 00 01 02 NB | 1/8 | 8 | 8.5 | 19.5 | 35 | 12 | 10 |
| 04020 00 01 03 NB | 1/4 | 11 | 11 | 24.5 | 46 | 13 | 10 |
| 04020 00 01 04 NB | 3/8 | 11.5 | 12 | 27 | 51 | 16 | 10 |
| 04020 00 01 05 NB | 1/2 | 14 | 15 | 32 | 59 | 20 | 10 |
| 04020 00 01 07 NT | 3/4 | 14.5 | 16.5 | 36.5 | 64 | 27 | 10 |
| 04020 00 01 09 NT | 1" | 16.8 | 19 | 45 | 78 | 30 | 5 |

4030

RACCORDO A T FEMMINA LATERALE

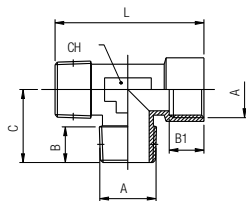
OFF SET FEMALE TEE

T-VERSCHRAUBUNG INNENGEW. SEITLICH

TÉ ÉGAL MÂLE, EN BOUT FEMELLE

RACOR A T HEMBRA LATERAL

CONEXÃO EM "T" COM ROSCA FÊMEA LATERAL



| Code | A | B | B1 | C | L | CH | Pack. |
|-------------------|-----|------|------|------|------|----|-------|
| 04030 00 01 02 NB | 1/8 | 8 | 8.5 | 17.5 | 37 | 12 | 10 |
| 04030 00 01 03 NB | 1/4 | 11 | 11 | 23 | 47.5 | 13 | 10 |
| 04030 00 01 04 NB | 3/8 | 11.5 | 12 | 25.5 | 52.5 | 16 | 10 |
| 04030 00 01 05 NB | 1/2 | 14 | 15 | 29.5 | 61.5 | 20 | 10 |
| 04030 00 01 07 NT | 3/4 | 14.5 | 16.5 | 32 | 68.5 | 27 | 10 |
| 04030 00 01 09 NT | 1" | 16.8 | 19 | 39 | 84 | 30 | 5 |

4040

RACCORDO A T MASCHIO CENTRALE

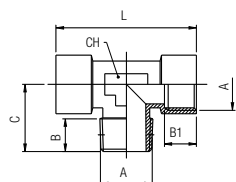
CENTRE LEG MALE TEE

T-VERSCHRAUBUNG AUSSENGEW. MITTIG

TÉ ÉGAL FEMELLE, CENTRE MÂLE

RACOR A T MACHO CENTRAL

CONEXÃO EM "T" COM ROSCA MACHO CENTRAL



| Code | A | B | B1 | C | L | CH | Pack. |
|-------------------|-----|------|------|------|----|----|-------|
| 04040 00 01 B5 NB | M5 | 4 | 5.5 | 11 | 22 | 9 | 10 |
| 04040 00 01 02 NB | 1/8 | 8 | 8.5 | 17.5 | 39 | 12 | 10 |
| 04040 00 01 03 NB | 1/4 | 11 | 11 | 23 | 49 | 13 | 10 |
| 04040 00 01 04 NB | 3/8 | 11.5 | 12 | 25.5 | 54 | 16 | 10 |
| 04040 00 01 05 NB | 1/2 | 14 | 15 | 29.5 | 64 | 20 | 10 |
| 04040 00 01 07 NT | 3/4 | 14.5 | 16.5 | 32 | 73 | 27 | 10 |
| 04040 00 01 09 NT | 1" | 16.8 | 19 | 39 | 90 | 30 | 5 |

4050

RACCORDO A T MASCHIO LATERALE

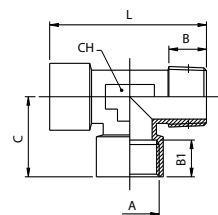
OFF SET MALE TEE

T-VERSCHRAUBUNG AUSSENGEW. SEITLICH

TÉ ÉGAL FEMELLE, EN BOUT MÂLE

RACOR A T MACHO LATERAL

CONEXÃO EM "T" COM ROSCA MACHO LATERAL



| Code | A | B | B1 | C | L | CH | Pack. |
|-------------------|-----|------|------|------|------|----|-------|
| 04050 00 01 B5 NB | M5 | 4 | 5.5 | 11 | 22 | 9 | 10 |
| 04050 00 01 02 NB | 1/8 | 8 | 8.5 | 19.5 | 37 | 12 | 10 |
| 04050 00 01 03 NB | 1/4 | 11 | 11 | 24.5 | 47.5 | 13 | 10 |
| 04050 00 01 04 NB | 3/8 | 11.5 | 12 | 27 | 52.5 | 16 | 10 |
| 04050 00 01 05 NB | 1/2 | 14 | 15 | 32 | 61.5 | 20 | 10 |
| 04050 00 01 07 NT | 3/4 | 14.5 | 16.5 | 36.5 | 68.5 | 27 | 10 |
| 04050 00 01 09 NT | 1" | 16.8 | 19 | 45 | 84 | 30 | 5 |

5000

RACCORDO A L MASCHIO

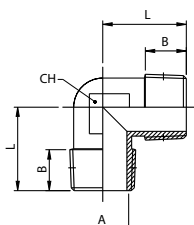
MALE ELBOW

WINKELVERSCHRAUBUNG AUSSENGEW.

EQUERRE MÂLE

RACOR A L MACHO

CONEXÃO EM "L" COM ROSCA MACHO

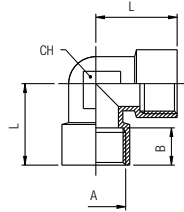


| Code | A | B | L | CH | Pack. |
|-------------------|-----|------|------|----|-------|
| 05000 00 01 B5 NB | M5 | 4 | 11.9 | 9 | 10 |
| 05000 00 01 02 NB | 1/8 | 7.5 | 18 | 11 | 10 |
| 05000 00 01 03 NB | 1/4 | 11 | 24 | 13 | 10 |
| 05000 00 01 04 NB | 3/8 | 12 | 27 | 17 | 10 |
| 05000 00 01 05 NB | 1/2 | 14 | 29.5 | 20 | 10 |
| 05000 00 01 07 NT | 3/4 | 14.5 | 32 | 27 | 10 |
| 05000 00 01 09 NT | 1" | 16.8 | 39 | 30 | 5 |

5010

RACCORDO A L FEMMINA

FEMALE ELBOW
WINKELVERSCHRAUBUNG INNENGEW.
EQUERRE FEMELLE
RACOR A L HEMBRA
CONEXÃO EM "L" COM ROSCA FÊMEA

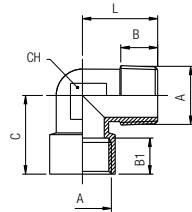


| Code | A | B | L | CH | Pack. |
|-------------------|-----|------|------|----|-------|
| 05010 00 01 B5 NB | M5 | 5.5 | 11 | 9 | 10 |
| 05010 00 01 02 NB | 1/8 | 8.5 | 21 | 11 | 10 |
| 05010 00 01 03 NB | 1/4 | 11 | 25.5 | 13 | 10 |
| 05010 00 01 04 NB | 3/8 | 11.5 | 28 | 17 | 10 |
| 05010 00 01 05 NB | 1/2 | 15 | 32 | 20 | 10 |
| 05010 00 01 07 NT | 3/4 | 16.5 | 36.5 | 27 | 10 |
| 05010 00 01 09 NT | 1" | 19 | 45 | 30 | 5 |

5020

RACCORDO A L MASCHIO-FEMMINA

MALE-FEMALE ELBOW
WINKELVERSCHRAUBUNG AUSSEN-/INNENGEW.
EQUERRE MÂLE-FEMELLE
RACOR A L MACHO - HEMBRA
CONEXÃO EM "L" MACHO-FÊMEA

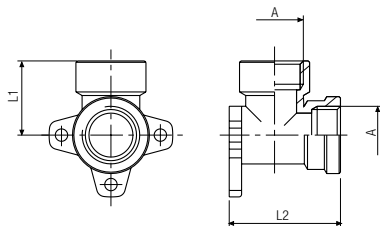


| Code | A | B | B1 | C | L | CH | Pack. |
|-------------------|-----|------|------|------|------|----|-------|
| 05020 00 01 B5 NB | M5 | 4 | 5.5 | 11.5 | 11.5 | 9 | 10 |
| 05020 00 01 02 NB | 1/8 | 7.5 | 8.5 | 21 | 18 | 11 | 10 |
| 05020 00 01 03 NB | 1/4 | 11 | 11 | 25.5 | 24 | 13 | 10 |
| 05020 00 01 04 NB | 3/8 | 11.5 | 12 | 28 | 27 | 17 | 10 |
| 05020 00 01 05 NB | 1/2 | 14 | 15 | 32 | 29.5 | 20 | 10 |
| 05020 00 01 07 NT | 3/4 | 14.5 | 16.5 | 36.5 | 32 | 27 | 10 |
| 05020 00 01 09 NT | 1" | 16 | 19 | 45 | 39 | 30 | 5 |

5050

RACCORDO A STAFFA 90° FEMMINA

FEMALE BRACKET FITTING 90°
WANDBEFESTIGUNG 90° INNENGEW.
APPLIQUE MURALE
RACOR A L FIJACIÓN 90° CON SOPORTE
CONEXÃO EM "L" COM ROSCA FÊMEA E SUPORTE DE FIXAÇÃO

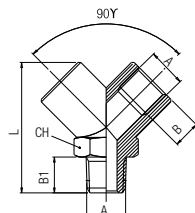


| Code | A | L1 | L2 | Pack. |
|-------------------|-----|----|------|-------|
| 05050 00 01 05 NB | 1/2 | 27 | 40.5 | 10 |

6000

RACCORDO A Y 90° MASCHIO CENTRALE

CENTRAL MALE Y 90°
Y-VERSCHRAUBUNG 90° AUSSEN-/INNENGEW.
Y EGAL À 90° MALE AU CENTRE
RACOR A Y 90° MACHO CENTRAL
CONEXÕES EM "Y" 90° ROSCA MACHO CENTRAL



| Code | A | B | B1 | L | CH | Pack. |
|-------------------|-----|------|------|----|----|-------|
| 06000 00 01 02 NB | 1/8 | 8.5 | 9 | 33 | 14 | 10 |
| 06000 00 01 03 NB | 1/4 | 11 | 11 | 37 | 17 | 10 |
| 06000 00 01 04 NB | 3/8 | 11.5 | 12.5 | 46 | 22 | 10 |
| 06000 00 01 05 NB | 1/2 | 14 | 16.5 | 58 | 26 | 10 |

6010

RACCORDO A Y 90° FEMMINA

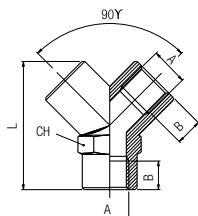
FEMALE Y 90°

Y-VERSCHRAUBUNG 90° INNENGEW.

Y ÉGAL FEMELLE

RACOR A Y 90° HEMBRA

CONEXÃO EM "Y" COM ROSCA FÊMEA



| Code | A | B | L | CH | Pack. |
|-------------------|-----|------|----|----|-------|
| 06010 00 01 02 NB | 1/8 | 8.5 | 33 | 14 | 10 |
| 06010 00 01 03 NB | 1/4 | 11 | 37 | 17 | 10 |
| 06010 00 01 04 NB | 3/8 | 11.5 | 46 | 22 | 10 |
| 06010 00 01 05 NB | 1/2 | 14 | 58 | 26 | 10 |

6020

RACCORDO A CROCE FEMMINA

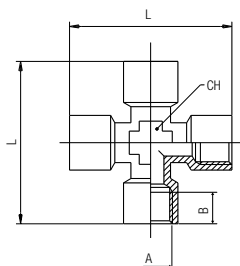
FEMALE EQUAL CROSS

KREUZVERSCHRAUBUNG INNENGEW.

CROIX ÉGALE FEMELLE

RACOR A CRUZ HEMBRA

CONEXÃO CRUZETA COM ROSCA FÊMEA



| Code | A | B | L | CH | Pack. |
|-------------------|-----|-----|----|----|-------|
| 06020 00 01 02 NB | 1/8 | 8.5 | 39 | 11 | 10 |
| 06020 00 01 03 NB | 1/4 | 11 | 50 | 13 | 10 |
| 06020 00 01 04 NB | 3/8 | 12 | 56 | 17 | 10 |
| 06020 00 01 05 NB | 1/2 | 15 | 64 | 20 | 10 |

6025

RACCORDO A CROCE MASCHIO-FEMMINA

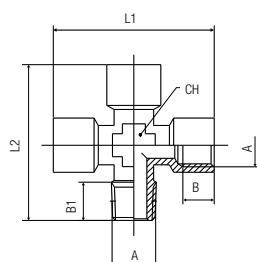
MALE-FEMALE EQUAL CROSS

KREUZVERSCHRAUBUNG AUSSEN-/INNENGEW.

CROIX ÉGALE MÂLE/FEMELLE

RACOR A CRUZ MACHO-HEMBRA

CONEXÃO CRUZETA MACHO-FÊMEA



| Code | A | B | B1 | L1 | L2 | CH | Pack. |
|-------------------|-----|-----|------|----|------|----|-------|
| 06025 00 01 02 NB | 1/8 | 8.5 | 8 | 39 | 37 | 11 | 10 |
| 06025 00 01 03 NB | 1/4 | 11 | 11 | 50 | 48.5 | 13 | 10 |
| 06025 00 01 04 NB | 3/8 | 12 | 11.5 | 56 | 54 | 17 | 10 |
| 06025 00 01 05 NB | 1/2 | 15 | 14 | 64 | 61 | 20 | 10 |

6030

RACCORDO A CROCE MASCHIO

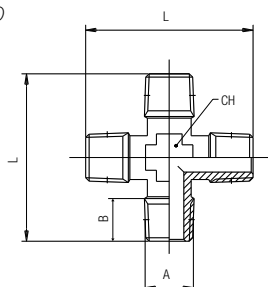
MALE EQUAL CROSS

KREUZVERSCHRAUBUNG AUSSENGEW.

CROIX ÉGALE MÂLE

RACOR A CRUZ MACHO

CONEXÃO CRUZETA COM ROSCA MACHO

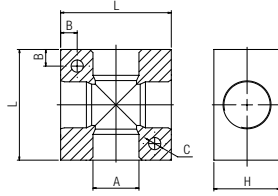


| Code | A | B | L | CH | Pack. |
|-------------------|-----|------|----|----|-------|
| 06030 00 01 02 NB | 1/8 | 8 | 35 | 11 | 10 |
| 06030 00 01 03 NB | 1/4 | 11 | 47 | 13 | 10 |
| 06030 00 01 04 NB | 3/8 | 11.5 | 52 | 17 | 10 |
| 06030 00 01 05 NB | 1/2 | 14 | 58 | 20 | 10 |

6040

RACCORDO A CROCE IN ALLUMINIO

ALUMINIUM TEE CROSS
KREUZVERTEILER AUS ALUMINIUM
CROIX DE DISTRIBUTION EN ALUMINIUM
RACOR A CRUZ EN ALUMINIO
CONEXÃO CRUZETA EM ALUMÍNIO

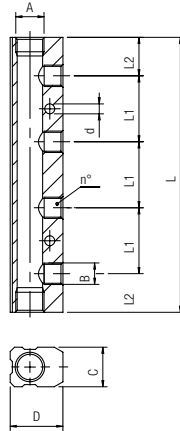


| Code | A | L | H | B | C | Pack. |
|-------------------|-----|----|----|-----|-----|-------|
| 06040 00 11 02 AG | 1/8 | 25 | 15 | 4.3 | 4.5 | 10 |
| 06040 00 11 03 AG | 1/4 | 40 | 20 | 6.5 | 5.5 | 10 |
| 06040 00 11 04 AG | 3/8 | 50 | 25 | 7.5 | 5.5 | 5 |
| 06040 00 11 05 AG | 1/2 | 50 | 30 | 7.5 | 5.5 | 5 |

6047

RIPARTITORE IN ALLUMINIO

ALUMINIUM DISTRIBUTION MANIFOLD
VERTEILERBLOCK AUS ALUMINIUM
NOURRICE DE DISTRIBUTION EN ALUMINIUM
REGLETA SIMPLE EN ALUMINIO
DISTRIBUIDOR EM ALUMÍNIO

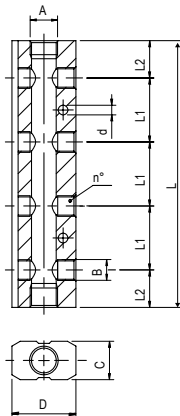


| Code | A | B | N° | C | D | L1 | L2 | L | d | Pack. |
|-------------------|-----|-----|----|----|----|----|------|-----|-----|-------|
| 06047 00 11 AJ AG | 1/4 | 1/8 | 2 | 18 | 24 | 30 | 17.5 | 65 | 4.5 | 5 |
| 06047 00 11 AK AG | 1/4 | 1/8 | 3 | 18 | 24 | 30 | 17.5 | 95 | 4.5 | 5 |
| 06047 00 11 AW AG | 1/4 | 1/8 | 4 | 18 | 24 | 30 | 17.5 | 125 | 4.5 | 5 |
| 06047 00 11 BA AG | 1/4 | 1/8 | 5 | 18 | 24 | 30 | 17.5 | 155 | 4.5 | 5 |
| 06047 00 11 BB AG | 1/4 | 1/8 | 6 | 18 | 24 | 30 | 17.5 | 185 | 4.5 | 5 |
| 06047 00 11 BC AG | 3/8 | 1/4 | 2 | 22 | 30 | 36 | 20 | 76 | 5.5 | 5 |
| 06047 00 11 BD AG | 3/8 | 1/4 | 3 | 22 | 30 | 36 | 20 | 112 | 5.5 | 5 |
| 06047 00 11 BE AG | 3/8 | 1/4 | 4 | 22 | 30 | 36 | 20 | 148 | 5.5 | 5 |
| 06047 00 11 BF AG | 3/8 | 1/4 | 5 | 22 | 30 | 36 | 20 | 184 | 5.5 | 5 |
| 06047 00 11 BG AG | 3/8 | 1/4 | 6 | 22 | 30 | 36 | 20 | 220 | 5.5 | 5 |
| 06047 00 11 ES AG | 1/2 | 3/8 | 2 | 26 | 35 | 40 | 25 | 90 | 5.5 | 5 |
| 06047 00 11 ET AG | 1/2 | 3/8 | 3 | 26 | 35 | 40 | 25 | 130 | 5.5 | 5 |
| 06047 00 11 EU AG | 1/2 | 3/8 | 4 | 26 | 35 | 40 | 25 | 170 | 5.5 | 5 |
| 06047 00 11 EV AG | 1/2 | 3/8 | 5 | 26 | 35 | 40 | 25 | 210 | 5.5 | 5 |
| 06047 00 11 EZ AG | 1/2 | 3/8 | 6 | 26 | 35 | 40 | 25 | 250 | 5.5 | 5 |

6048

RIPARTITORE DOPPIO IN ALLUMINIO

ALUMINIUM DOUBLE DISTRIBUTION MANIFOLD
DOPPELTER VERTEILERBLOCK AUS ALUMINIUM
NOURRICE DE DISTRIBUTION DOUBLE EN ALUMINIUM
REGLETA DOBLE EN ALUMINIO
DISTRIBUIDOR DUPLO EM ALUMÍNIO

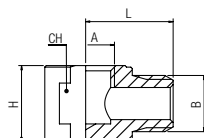


| Code | A | B | N° | C | D | L1 | L2 | L | d | Pack. |
|-------------------|-----|-----|----|----|----|----|------|-----|-----|-------|
| 06048 00 11 AJ AG | 1/4 | 1/8 | 2 | 18 | 30 | 30 | 17.5 | 65 | 4.5 | 5 |
| 06048 00 11 AK AG | 1/4 | 1/8 | 3 | 18 | 30 | 30 | 17.5 | 95 | 4.5 | 5 |
| 06048 00 11 AW AG | 1/4 | 1/8 | 4 | 18 | 30 | 30 | 17.5 | 125 | 4.5 | 5 |
| 06048 00 11 BA AG | 1/4 | 1/8 | 5 | 18 | 30 | 30 | 17.5 | 155 | 4.5 | 5 |
| 06048 00 11 BB AG | 1/4 | 1/8 | 6 | 18 | 30 | 30 | 17.5 | 185 | 4.5 | 5 |
| 06048 00 11 BC AG | 3/8 | 1/4 | 2 | 22 | 38 | 36 | 20 | 76 | 5.5 | 5 |
| 06048 00 11 BD AG | 3/8 | 1/4 | 3 | 22 | 38 | 36 | 20 | 112 | 5.5 | 5 |
| 06048 00 11 BE AG | 3/8 | 1/4 | 4 | 22 | 38 | 36 | 20 | 148 | 5.5 | 5 |
| 06048 00 11 BF AG | 3/8 | 1/4 | 5 | 22 | 38 | 36 | 20 | 184 | 5.5 | 5 |
| 06048 00 11 BG AG | 3/8 | 1/4 | 6 | 22 | 38 | 36 | 20 | 220 | 5.5 | 5 |
| 06048 00 11 ES AG | 1/2 | 3/8 | 2 | 26 | 44 | 40 | 25 | 90 | 5.5 | 5 |
| 06048 00 11 ET AG | 1/2 | 3/8 | 3 | 26 | 44 | 40 | 25 | 130 | 5.5 | 5 |
| 06048 00 11 EU AG | 1/2 | 3/8 | 4 | 26 | 44 | 40 | 25 | 170 | 5.5 | 5 |
| 06048 00 11 EV AG | 1/2 | 3/8 | 5 | 26 | 44 | 40 | 25 | 210 | 5.5 | 5 |
| 06048 00 11 EZ AG | 1/2 | 3/8 | 6 | 26 | 44 | 40 | 25 | 250 | 5.5 | 5 |

6070

RACCORDO A L MASCHIO-FEMMINA

MALE-FEMALE ELBOW FITTING
WINKELVERSCHRAUBUNG AUSSEN-/INNENGEW.
RACCORD EQUERRE MÂLE/FEMELLE
RACOR A L MACHO HEMBRA
CONEXÃO EM "L" MACHO-FÊMEA



| Code | A | B | H | L | CH | Pack. |
|-------------------|-----|-----|----|----|----|-------|
| 06070 00 01 2W NB | 1/8 | 1/8 | 13 | 15 | 13 | 10 |
| 06070 00 01 6W NB | 1/4 | 1/4 | 18 | 19 | 18 | 10 |

6080

RACCORDO A T MASCHIO-FEMMINA-FEMMINA

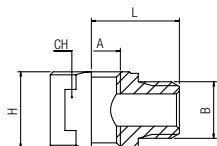
MALE-FEMALE-FEMALE TEE FITTING

T-VERSCHRAUBUNG AUSSEN-/INNEN-/INNENGEW.

RACCORD TÉ MÂLE / FEMELLE

RACOR A T MACHO-HEMBRA-HEMBRA

CONEXÃO EM "T" MACHO-FÊMEA



| Code | A | B | H | L | CH | Pack. |
|-------------------|-----|-----|----|------|----|-------|
| 06080 00 01 2W NT | 1/8 | 1/8 | 13 | 15 | 13 | 10 |
| 06080 00 01 6W NT | 1/4 | 1/4 | 18 | 18.5 | 18 | 10 |

6090

ANELLO ORIENTABILE A L FEMMINA

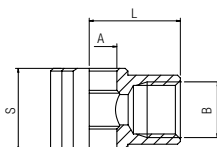
FEMALE SINGLE BANJO BODY

RINGANSCHLUSS INNENGEW.

CORPS BANJO FEMELLE

ANILLO ORIENTABLE HEMBRA

ANEL ORIENTÁVEL EM "L" COM ROSCA FÊMEA



| Code | B | A | L | S | Pack. |
|-------------------|-----|------|------|----|-------|
| 06090 00 01 02 NB | 1/8 | 10 | 16.5 | 15 | 10 |
| 06090 00 01 03 NB | 1/4 | 13 | 22 | 17 | 10 |
| 06090 00 01 04 NB | 3/8 | 16.7 | 26 | 20 | 10 |

* Montare su viti: (Cod. 51410, 51420, 51430, 51440)

* Mounting on screws: (Cod. 51410, 51420, 51430, 51440)

* Montage auf Schrauben: (Cod. 51410, 51420, 51430, 51440)

* Montage sur vis: (Cod. 51410, 51420, 51430, 51440)

* Montaje en tornillos: (Cod. 51410, 51420, 51430, 51440)

* Montagem nos parafusos: (Cod. 51410, 51420, 51430, 51440)

82205

NIPPLA MASCHIO CONICO - NPTF

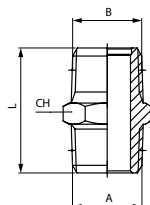
NIPPLE TAPER - NPTF

DOPPELNIPPEL KONISCH - NPTF

MAMELON DOUBLE CONIQUE - NPTF

MACHÓN CÓNICO - NPTF

NIPLE CÔNICA - NPTF



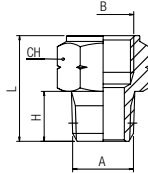
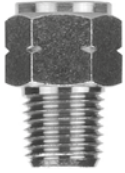
| Code | A BSPT | B NPTF | L | CH | Pack. |
|-------------------|--------|--------|------|----|-------|
| 82205 00 01 2W NB | 1/8 | 1/8 | 20.5 | 12 | 10 |
| 82205 00 01 6W NB | 1/4 | 1/4 | 29 | 14 | 10 |
| 82205 00 01 AB NB | 3/8 | 3/8 | 29.5 | 18 | 10 |
| 82205 00 01 AG NB | 1/2 | 1/2 | 36.5 | 22 | 10 |
| 82205 00 01 AN NB | 3/4 | 3/4 | 40.5 | 27 | 10 |

82241

New

ADATTATORE FEMMINA CILINDRICO - MASCHIO NPTF

ADAPTER FEMALE BSP - MALE NPTF
 GEWINDESTUTZEN IG BSP - AG NPTF
 ADAPTATEUR FEMELLE BSP - MÂLE NPTF
 ADAPTADOR HEMBRA CILÍNDRICO BSP - MACHO NPTF
 ADAPTADOR FÊMEA COM ROSCA PARALELA BSP - MACHO NPTF

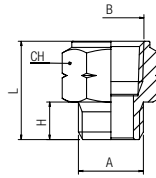


| Code | A NPTF | B G | H | L | CH | Pack. |
|-----------------------------|--------|-----|-----|------|----|-------|
| 82241 00 01 8K NB 10/32 UNF | M5 | | 4.5 | 12 | 8 | 10 |
| 82241 00 01 2W NB | 1/8 | 1/8 | 8.5 | 19.5 | 14 | 10 |
| 82241 00 01 6W NB | 1/4 | 1/4 | 13 | 27 | 17 | 10 |
| 82241 00 01 AB NB | 3/8 | 3/8 | 13 | 28 | 22 | 10 |
| 82241 00 01 AG NB | 1/2 | 1/2 | 17 | 34.5 | 27 | 10 |

82242

ADATTATORE FEMMINA NPTF - MASCHIO CILINDRICO

ADAPTER FEMALE NPTF - MALE G THREAD
 GEWINDESTUTZEN IG NPTF - AG BSP
 ADAPTATEUR FEMELLE NPTF - MÂLE BSP
 ADAPTADOR HEMBRA NPTF - MACHO BSP
 ADAPTADOR FÊMEA NPTF - MACHO BSP



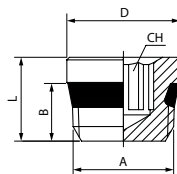
| Code | A G | B NPTF | H | L | CH | Pack. |
|-------------------|-----|--------|----|------|----|-------|
| 82242 00 01 2W NB | 1/8 | 1/8 | 6 | 17 | 14 | 10 |
| 82242 00 01 6W NB | 1/4 | 1/4 | 8 | 23 | 17 | 10 |
| 82242 00 01 AB NB | 3/8 | 3/8 | 9 | 24 | 22 | 10 |
| 82242 00 01 AG NB | 1/2 | 1/2 | 12 | 31.5 | 27 | 10 |

82320

New

TAPPO MASCHIO UNIVERSAL SHORT ESAGONO INCASSATO CON ANELLO (Cod. 50006) NBR

MALE PLUG UNIVERSAL SHORT WITH HEXAGON EMBEDDED AND NBR O-RING
 GEWINDESTOPFEN UNIVERSAL SHORT INNENSECHSKANT MIT O-RING NBR
 BOUCHON À 6 PANS CREUX MÂLE, UNIVERSAL SHORT AVEC JOINT NBR
 TAPÓN MACHO UNIVERSAL SHORT HEXÁGONO INTERIOR CON TÓRICA NBR
 TAMPÃO MACHO COM ROSCA UNIVERSAL SHORT E SEXTAVADO INTERNO (O-RING EM NBR)



Cod. 50006

| Code | A SHORT | B | D | L | CH | Pack. |
|--------------|---------|-----|----|----|----|-------|
| 82320 00 002 | 1/8 | 5.5 | 11 | 8 | 5 | 10 |
| 82320 00 003 | 1/4 | 7 | 14 | 10 | 6 | 10 |
| 82320 00 004 | 3/8 | 7.5 | 17 | 11 | 8 | 10 |
| 82320 00 005 | 1/2 | 9 | 21 | 13 | 10 | 10 |



Temperature

min - 20 °C
 max + 80 °C

RACCORDI FILETTATI - CW 510L

CW 510L - BRASS ADAPTORS
 GEWINDEVERSCHRAUBUNGEN - CW 510L
 ACCESSOIRES DE RACCORDEMENT - CW 510L
 RACORDAJE ROSCADO - CW 510L
 ACESSÓRIOS ROSCADOS - CW510L



CARATTERISTICHE TECNICHE

TECHNICAL CHARACTERISTICS
 TECHNISCHE ANGABEN
 CARACTÉRISTIQUES TECHNIQUES
 CARACTERÍSTICAS TÉCNICAS
 CARACTERÍSTICAS TÉCNICAS



Norma di Riferimento

Reference standard

Entspricht der Norm

Norme de référence

Normativa de referencia

Norma de referència

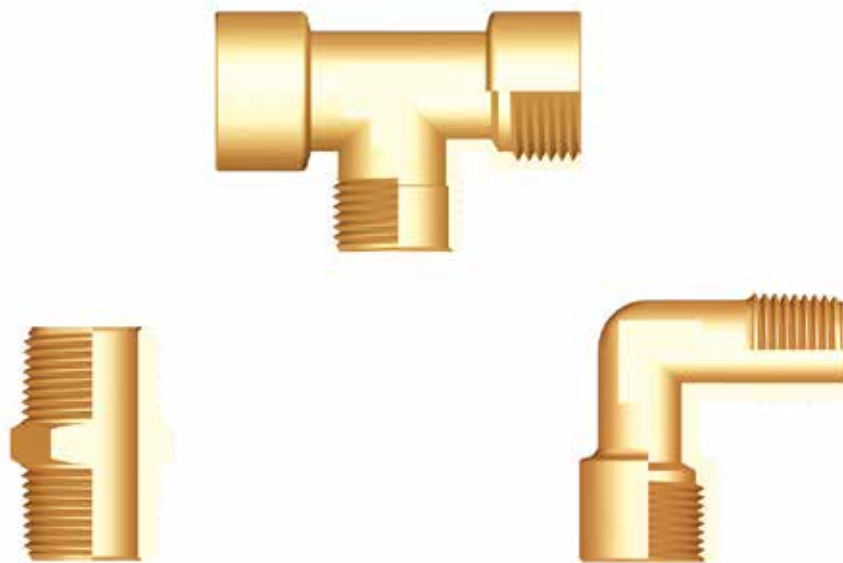
1907/2006
 REACH ✓

2011/65/CE
 RoHS ✓

M.O.C.A.
 1935/2004
 CE

PED
 2014/68/UE

SILICON
 FREE



Materiali e Componenti

IT

La maggior parte degli articoli di questa serie è composta da un unico particolare in CW 510L

Component Parts and Materials

GB

The main part of these fittings is made in CW 510L

Komponenten und Materialien

DE

Die meisten Artikel in dieser Serie werden aus CW 510L

Matériaux et Composants

FR

La majeure partie des raccords de ce chapitre est fabriquée en laiton CW 510L

Materiales y Componentes

ES

La mayor parte de los artículos de esta serie está compuesta de un solo material latón CW 510L

Materials e Componentes

PT

A maior parte dos itens desta série é fabricada em CW 510L



Misura
 Size
 Grösse
 Dimensions
 Medida
 Tamanho

Pressione consigliata
 Pressure advised
 Empfohlener druck
 Pression conseillée
 Presión recomendada
 Pressão aconselhada

1/8

-0.99 bar ~ 150 bar

1/4

-0.99 bar ~ 100 bar



Temperature massima

Maximum temperature

Maximum temperatur

Température maximale

Temperatura máxima

Temperatura máxima

+ 300 °C



Fluidi compatibili

Aria compressa / Vuoto / Acqua / Vapore / Alimenti

Fluids

Compressed air / Vacuum / Water / Steam / Food

Geeignete Medien

Druckluft / Vakuum / Wasser / Dampf / Lebensmittel

Fluides compatibles

Air comprimé / Vide / Eau / Vapeur / Boissons

Fluidos compatibles

Aire comprimido / Vacío / Agua / Vapor / Alimentos

Fluidos compatíveis

Ar comprimido / Vácuo / Água / Vapor / Alimentos



Tubi di Collegamento

Tubi e raccordi in genere.

IT

Connection Tubes

Tubes and fittings in general.

GB

Geeignete Rohre

Rohre und Verschraubungen im Allgemeinen.

DE

Tubes Conseillés

Raccords et tubes compatibles.

FR

Tubos de Conexión

Tubo y racordaje en general.

ES

Tubos de Conexão

Tubos e conexões em geral.

PT



Filettatura

Gas conica conforme ISO 7.1, BS 21, DIN 2999.
Gas cilindrica conforme ISO 228 Classe A.

IT

Threads

Tapered gas in conformity with ISO 7.1, BS 21, DIN 2999.
Parallel gas in conformity with ISO 228 Class A.

GB

Gewindearten

Konisches Gewinde nach Norm ISO 7.1, BS 21, DIN 2999.
Zylindrisches Gewinde nach Norm ISO 228 Classe A.

DE

Filetages

Filetage conique conforme: ISO 7.1, BS 21, DIN 2999.
Filetage cylindrique conforme: ISO 228 Classe A.

FR

Roscas

Gas cónica conforme ISO 7.1, BS 21, DIN 2999.
Gas cilíndrica conforme ISO 228 Classe A.

ES

Roscas

Gas cônica conforme ISO 7.1, BS 21, DIN 2999.
Gas paralela conforme ISO 228 Classe A.

PT

2000

NIPPLO CONICO

NIPPLE (TAPER)

DOPPELNIPPEL KONISCH

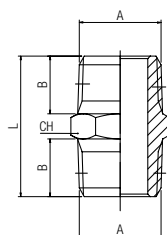
MAMELON DOUBLE CONIQUE

MACHÓN CÓNICO

NIPLE COM ROSCA CÓNICA



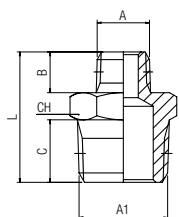
| Code | A | B | L | CH | Pack. |
|-------------------|-----|-----|------|----|-------|
| 02000 00 89 02 00 | 1/8 | 7.5 | 19.5 | 12 | 50 |
| 02000 00 89 03 00 | 1/4 | 11 | 27 | 14 | 50 |



2020

NIPPLIO DI RIDUZIONE CONICO

REDUCING NIPPLE (TAPER)
 DOPPELNIPPEL REDUZIERT KONISCH
 MAMELON DOUBLE INÉGAL, CONIQUE
 MACHÓN CÓNICO DE REDUCCIÓN
 NIPLE DE REDUÇÃO COM ROSCA CÔNICA

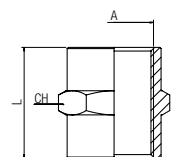


| Code | A | A1 | B | C | L | CH | Pack. |
|-------------------|-----|-----|-----|----|------|----|-------|
| 02020 00 89 AT 00 | 1/8 | 1/4 | 7.5 | 11 | 23.5 | 14 | 50 |

3000

MANICOTTO

SLEEVE
 MUFFE
 MANCHON
 MANGUITO
 LUVA

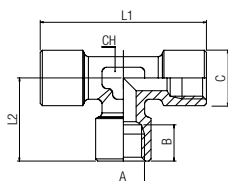


| Code | A | L | CH | Pack. |
|-------------------|-----|----|----|-------|
| 03000 00 89 02 00 | 1/8 | 15 | 14 | 50 |
| 03000 00 89 03 00 | 1/4 | 22 | 17 | 50 |

4000

RACCORDO A T FEMMINA

FEMALE TEE
 T-VERSCHRAUBUNG INNENGEW.
 TÉ ÉGAL FEMELLE
 RACOR A T HEMBRA
 CONEXÃO EM "T" COM ROSCA FÊMEA

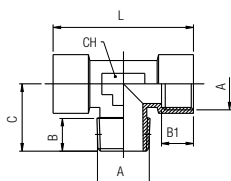


| Code | A | B | L2 | L1 | C | CH | Pack. |
|-------------------|-----|-----|------|----|------|----|-------|
| 04000 00 89 02 00 | 1/8 | 8.5 | 19.5 | 39 | 13 | 12 | 50 |
| 04000 00 89 03 00 | 1/4 | 11 | 24.5 | 49 | 16.5 | 13 | 25 |

4040

RACCORDO A T MASCHIO CENTRALE

CENTRE LEG MALE TEE
 T-VERSCHRAUBUNG AUSSENGEW. MITTIG
 TÉ ÉGAL FEMELLE, CENTRE MÂLE
 RACOR A T MACHO CENTRAL
 CONEXÃO EM "T" COM ROSCA MACHO CENTRAL

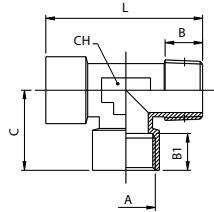


| Code | A | B | B1 | C | L | CH | Pack. |
|-------------------|-----|----|-----|------|----|----|-------|
| 04040 00 89 02 00 | 1/8 | 8 | 8.5 | 17.5 | 39 | 12 | 50 |
| 04040 00 89 03 00 | 1/4 | 11 | 11 | 23 | 49 | 13 | 25 |

4050

RACCORDO A T MASCHIO LATERALE

OFF SET MALE TEE
 T-VERSCHRAUBUNG AUSSENGEW. SEITLICH
 TÉ ÉGAL FEMELLE, EN BOUT MÂLE
 RACOR A T MACHO LATERAL
 CONEXÃO EM "T" COM ROSCA MACHO LATERAL

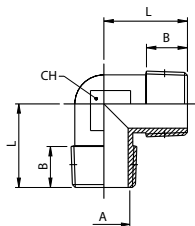


| Code | A | B | B1 | C | L | CH | Pack. |
|-------------------|-----|----|-----|------|------|----|-------|
| 04050 00 89 02 00 | 1/8 | 8 | 8.5 | 19.5 | 37 | 12 | 50 |
| 04050 00 89 03 00 | 1/4 | 11 | 11 | 24.5 | 47.5 | 13 | 25 |

5000

RACCORDO A L MASCHIO

MALE ELBOW
 WINKELVERSCHRAUBUNG AUSSENGEW.
 EQUERRE MÂLE
 RACOR A L MACHO
 CONEXÃO EM "L" COM ROSCA MACHO

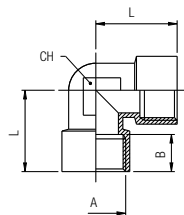


| Code | A | B | L | CH | Pack. |
|-------------------|-----|-----|----|----|-------|
| 05000 00 89 02 00 | 1/8 | 7.5 | 18 | 11 | 50 |
| 05000 00 89 03 00 | 1/4 | 11 | 24 | 13 | 25 |

5010

RACCORDO A L FEMMINA

FEMALE ELBOW
 WINKELVERSCHRAUBUNG INNENGEW.
 EQUERRE FEMELLE
 RACOR A L HEMBRA
 CONEXÃO EM "L" COM ROSCA FÊMEA

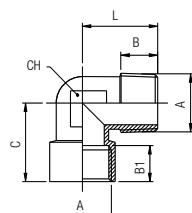


| Code | A | B | L | CH | Pack. |
|-------------------|-----|-----|------|----|-------|
| 05010 00 89 02 00 | 1/8 | 8.5 | 21 | 11 | 50 |
| 05010 00 89 03 00 | 1/4 | 11 | 25.5 | 13 | 25 |

5020

RACCORDO A L MASCHIO-FEMMINA

MALE-FEMALE ELBOW
 WINKELVERSCHRAUBUNG AUSSEN-/INNENGEW.
 EQUERRE MÂLE-FEMELLE
 RACOR A L MACHO - HEMBRA
 CONEXÃO EM "L" MACHO-FÊMEA



| Code | A | B | B1 | C | L | CH | Pack. |
|-------------------|-----|-----|-----|------|----|----|-------|
| 05020 00 89 02 00 | 1/8 | 7.5 | 8.5 | 21 | 18 | 11 | 50 |
| 05020 00 89 03 00 | 1/4 | 11 | 11 | 25.5 | 24 | 13 | 25 |

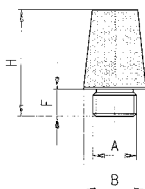
dB*

Livello di rumore in (dB) a 6 bar - Noise level in (dB) at 6 bar - Geräuschpegel (dB) bei 6 bar
Niveau sonore (dB) à 6 bar - Nivel de ruido en (dB) a 6 bar - Nivel de ruído em (dB) a 6 bar

7000

SILENZIATORE

SILENCER
SCHALLDÄMPFER
SILENCIEUX D'ÉCHAPPEMENT
SILENCIADOR
SILENCIADOR



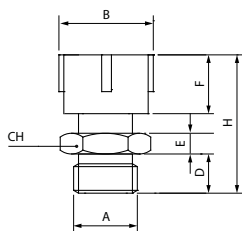
| Code | A | F | B | H | dB* | Pack. |
|--------------|-----|-----|------|------|------------|-------|
| 07000 00 001 | 1/8 | 4.5 | 12.5 | 21 | 81 | 10 |
| 07000 00 002 | 1/4 | 6 | 15 | 25 | 83 | 10 |
| 07000 00 003 | 3/8 | 8.5 | 19 | 34.5 | 87 | 10 |
| 07000 00 004 | 1/2 | 8 | 23 | 43 | 90 | 10 |
| 07000 00 005 | 3/4 | 9 | 30 | 50 | 92 a 4 Bar | 10 |
| 07000 00 006 | 1" | 11 | 37 | 60.5 | 92 a 4 Bar | 10 |

| | min | max |
|---|---------|---------|
| Temperature | - 10 °C | + 80 °C |
| Pressure | | 10 bar |
| Soglia di filtrazione - Filtration threshold - Filterfeinheit Capacité de filtration - Grado de filtración - Limite de filtragem | | 50 µm |

7005

SILENZIATORE REGOLABILE

SILENCER ADJUSTABLE
SCHALLDÄMPFER REGULIERBAR
SILENCIEUX D'ÉCHAPPEMENT RÉGLABLE
SILENCIADOR REGULABLE
SILENCIADOR AJUSTÁVEL



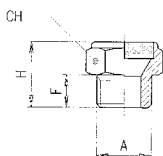
| Code | A | F | B | H _{min} | H _{max} | D | E | CH | Pack |
|--------------|-----|----|------|------------------|------------------|----|---|----|------|
| 07005 00 001 | 1/8 | 12 | 15 | 25 | 27 | 8 | 4 | 14 | 10 |
| 07005 00 002 | 1/4 | 14 | 18.5 | 28 | 30 | 8 | 4 | 17 | 10 |
| 07005 00 003 | 3/8 | 16 | 23.5 | 33 | 38 | 10 | 5 | 22 | 10 |
| 07005 00 004 | 1/2 | 18 | 28 | 39 | 46 | 12 | 7 | 27 | 10 |

| | min | max |
|---|---------|----------|
| Temperature | - 20 °C | + 150 °C |
| Pressure | | 10 bar |
| Soglia di filtrazione - Filtration threshold - Filterfeinheit Capacité de filtration - Grado de filtración - Limite de filtragem | | 50 µm |

7010

SILENZIATORE

SILENCER
SCHALLDÄMPFER
SILENCIEUX D'ÉCHAPPEMENT
SILENCIADOR
SILENCIADOR



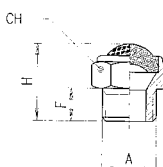
| Code | A | F | H | CH | dB* | Pack. |
|--------------|-----|----|----|----|-----|-------|
| 07010 00 001 | 1/8 | 6 | 14 | 13 | 73 | 10 |
| 07010 00 002 | 1/4 | 7 | 17 | 16 | 74 | 10 |
| 07010 00 003 | 3/8 | 8 | 18 | 19 | 85 | 10 |
| 07010 00 004 | 1/2 | 10 | 20 | 24 | 89 | 10 |
| 07010 00 005 | 3/4 | 10 | 23 | 30 | 90 | 10 |

| | min | max |
|---|---------|---------|
| Temperature | - 10 °C | + 80 °C |
| Pressure | | 12 bar |
| Soglia di filtrazione - Filtration threshold - Filterfeinheit Capacité de filtration - Grado de filtración - Limite de filtragem | | 100 µm |

7020

SILENZIATORE CON RETE IN FILO DI ACCIAIO INOX 304

SILENCER WITH WIRE MESH STAINLESS STEEL 304
SCHALLDÄMPFER MIT EDELSTAHLDRAHT 304
SILENCIEUX D'ÉCHAPPEMENT AVEC FILS EN ACIERS INOXYDABLES 304
SILENCIADOR CON ALAMBRE DE ACERO INOXIDABLE 304
SILENCIADOR FIO DE ACO INOXIDAVEL 304



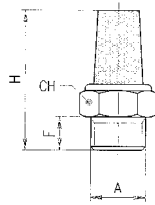
| Code | A | F | H | CH | dB* | Pack. |
|--------------|-----|----|----|----|-----|-------|
| 07020 00 001 | M5 | 4 | 9 | 8 | - | 10 |
| 07020 00 002 | 1/8 | 6 | 15 | 13 | 74 | 10 |
| 07020 00 003 | 1/4 | 7 | 18 | 16 | 72 | 10 |
| 07020 00 004 | 3/8 | 8 | 20 | 19 | 88 | 10 |
| 07020 00 005 | 1/2 | 10 | 22 | 24 | 90 | 10 |
| 07020 00 006 | 3/4 | 10 | 26 | 30 | 90 | 10 |
| 07020 00 007 | 1" | 12 | 28 | 36 | 92 | 10 |

| | min | max |
|---|---------|---------|
| Temperature | - 10 °C | + 80 °C |
| Pressure | | 12 bar |
| Soglia di filtrazione - Filtration threshold - Filterfeinheit Capacité de filtration - Grado de filtración - Limite de filtragem | | 100 µm |

7030

SILENZIATORE

SILENCER
SCHALLDÄMPFER
SILENCIEUX D'ÉCHAPPEMENT
SILENCIADOR
SILENCIADOR



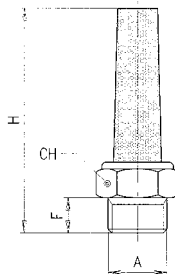
| Code | A | F | H | CH | dB* | Pack. |
|--------------|------|----|----|----|-----|-------|
| 07030 00 001 | M5 | 4 | 17 | 8 | - | 10 |
| 07030 00 008 | M7x1 | 5 | 23 | 10 | 75 | 10 |
| 07030 00 002 | 1/8 | 6 | 29 | 13 | 81 | 10 |
| 07030 00 003 | 1/4 | 7 | 32 | 16 | 82 | 10 |
| 07030 00 004 | 3/8 | 8 | 40 | 19 | 85 | 10 |
| 07030 00 005 | 1/2 | 9 | 45 | 24 | - | 10 |
| 07030 00 006 | 3/4 | 10 | 56 | 30 | - | 10 |
| 07030 00 007 | 1" | 12 | 66 | 36 | - | 10 |

| | min | max |
|---|---------|---------|
| Temperature | - 10 °C | + 80 °C |
| Pressure | | 10 bar |
| Soglia di filtrazione - Filtration threshold - Filterfeinheit Capacité de filtration - Grado de filtración - Limite de filtragem | | 50 µm |

7040

SILENZIATORE

SILENCER
SCHALLDÄMPFER
SILENCIEUX D'ÉCHAPPEMENT
SILENCIADOR
SILENCIADOR



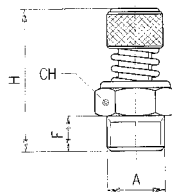
| Code | A | F | H | CH | dB* | Pack. |
|--------------|-----|---|----|----|-----|-------|
| 07040 00 001 | 1/8 | 6 | 44 | 13 | 76 | 10 |
| 07040 00 002 | 1/4 | 7 | 50 | 16 | 75 | 10 |
| 07040 00 003 | 3/8 | 8 | 54 | 19 | 88 | 10 |
| 07040 00 004 | 1/2 | 9 | 67 | 24 | 89 | 10 |
| 07040 00 005 | 3/4 | 9 | 65 | 30 | - | 10 |

| | min | max |
|---|---------|---------|
| Temperature | - 10 °C | + 80 °C |
| Pressure | | 12 bar |
| Soglia di filtrazione - Filtration threshold - Filterfeinheit Capacité de filtration - Grado de filtración - Limite de filtragem | | 36 µm |

7050

SILENZIATORE

SILENCER
SCHALLDÄMPFER
SILENCIEUX D'ÉCHAPPEMENT
SILENCIADOR
SILENCIADOR



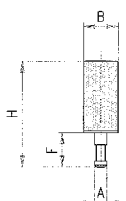
| Code | A | F | H min | H max | CH | dB* | Pack. |
|--------------|-----|----|-------|-------|----|-----|-------|
| 07050 00 001 | 1/8 | 6 | 26 | 28 | 13 | 72 | 10 |
| 07050 00 002 | 1/4 | 8 | 30 | 32 | 15 | 73 | 10 |
| 07050 00 003 | 3/8 | 10 | 35 | 38 | 22 | 84 | 10 |
| 07050 00 004 | 1/2 | 11 | 37 | 40 | 22 | 88 | 10 |

| | min | max |
|---|---------|---------|
| Temperature | - 10 °C | + 80 °C |
| Pressure | | 12 bar |
| Soglia di filtrazione - Filtration threshold - Filterfeinheit Capacité de filtration - Grado de filtración - Limite de filtragem | | 100 µm |

7060

SILENZIATORE A CALZAMENTO PER TUBI

PUSH-ON SILENCER
ÜBERWURFSCHALLDÄMPFER
SILENCIEUX D'ÉCHAPPEMENT À CANULE
SILENCIADOR RÁPIDO
SILENCIADOR PUSH-ON

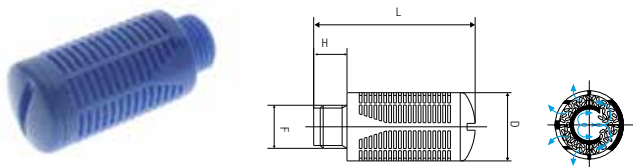


| Code | Tube | A | F | B | H | dB* | Pack. |
|--------------|------|-----|----|---|------|-----|-------|
| 07060 00 002 | 5/3 | 3.5 | 8 | 8 | 25.5 | - | 10 |
| 07060 00 003 | 6/4 | 5 | 10 | 8 | 26 | - | 10 |

| | min | max |
|---|---------|---------|
| Temperature | - 10 °C | + 80 °C |
| Pressure | | 10 bar |
| Soglia di filtrazione - Filtration threshold - Filterfeinheit Capacité de filtration - Grado de filtración - Limite de filtragem | | 50 µm |

7070

SILENZIATORE IN RESINA (POM) CON MATERIALE PP FONOASSORBENTE
 SILENCER MADE IN RESIN (POM) WITH PP SOUNDPROOFING MATERIAL
 SCHALLDÄMPFER AUS ACETAL MIT KUNSTSTOFFWOLLE
 SILENCIEUX EN ACETAL AVEC RÉSINE
 SILENCIADOR DE RESINA (POM) CON MATERIAL PP FONOABSORBENTE
 SILENCIADOR EM RESINA (POM) COM MATERIAL PP A PROVA DE SOM

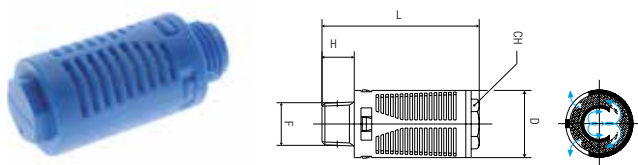


| Code | F | H | D | L | dB* | Pack. |
|--------------|-----|----|------|------|-----|-------|
| 07070 00 001 | 1/8 | 6 | 15 | 32.5 | 87 | 10 |
| 07070 00 002 | 1/4 | 8 | 19.5 | 43 | 84 | 10 |
| 07070 00 003 | 3/8 | 11 | 24.5 | 58 | 90 | 10 |
| 07070 00 004 | 1/2 | 11 | 24.5 | 58 | 90 | 10 |
| 07070 00 005 | 3/4 | 18 | 48 | 115 | 91 | 5 |
| 07070 00 006 | 1" | 18 | 48 | 115 | 90 | 5 |

| | min | max |
|-------------|---------|---------|
| Temperature | - 10 °C | + 50 °C |
| Pressure | 6 bar | |

7080

SILENZIATORE IN PA66 E FELTRO
 SILENCER MADE IN PA66 WITH FELT
 SCHALLDÄMPFER PA66 MIT FILZ
 SILENCIEUX EN PA66 AVEC DU FEUTRE
 SILENCIADOR EN PA66 Y FILTRO
 SILENCIADOR EM PA66 E FELTRO



| Code | F | H | D | L | CH | dB* | Pack. |
|--------------|-----|----|----|-----|----|-----|-------|
| 07080 00 001 | 1/8 | 6 | 16 | 34 | 2 | 87 | 10 |
| 07080 00 002 | 1/4 | 8 | 19 | 44 | 12 | 90 | 10 |
| 07080 00 003 | 3/8 | 10 | 24 | 56 | 17 | 92 | 10 |
| 07080 00 004 | 1/2 | 10 | 24 | 56 | 17 | 92 | 10 |
| 07080 00 005 | 3/4 | 18 | 48 | 115 | - | - | 5 |
| 07080 00 006 | 1" | 18 | 48 | 115 | - | - | 5 |

| | min | max |
|-------------|---------|---------|
| Temperature | - 10 °C | + 70 °C |
| Pressure | 6 bar | |

Attenuazione del suono

IT

Il diagramma mostra la distribuzione della frequenza dell'energia del suono da un getto d'aria ad una pressione di circa 6 bar da un tipico scarico di uscita di una valvola pneumatica da 1/2".

La zona critica fra 1 e 4 KHz, è la zona dove l'udito umano è più sensibile e dove gli effetti psicologici agli alti livelli di rumore sono più dannosi.

Come si nota dal diagramma l'attenuazione del suono è di circa 20-25 dB ad una pressione di 6 bar.

Sound Attenuation

GB

In the diagram is shown the frequency distribution of the sound energy in an 6 bar air jet from a typical 1/2" control valve exhaust port.

The critical region is that between 1 and 4 KHz, the range where psychological effects at high noise levels are most damaging.

Sound reduction for this silencer is approx mately 20-25 dB at 6 bar working pressure.

Längsschalldämmung

DE

Dieses Diagramm zeigt die Frequenzverteilung der Schallenergie, bei einem Luftstrahl von 6 bar Druck, aus einem typischen, pneumatischen Ablassventil mit 1/2".

Der kritische Bereich ist jener zwischen 1 und 4 kHz, der Bereich, bei dem die psychologischen Auswirkungen durch hohen Lärmpegel am schädlichsten sind.

Die Schalldämmung durch diesen Schalldämpfer beträgt rund 20-25 dB bei 6 bar Betriebsdruck.

Réduction sonore

FR

Le schéma suivant représente le niveau sonore d'un jet d'air à 6 bar dans un échappement de 1/2".

La zone critique aux bruits où les effets psychologiques sont nocifs se situe dans une plage de 1 à 4 kHz.

Ce silencieux diminue le bruit d'environ 20-25 dB à une pression de travail de 6 bar.

Atenuación del sonido

ES

El diagrama muestra la distribución de la frecuencia del sonido de una muestra de aire a una presión de 6 bar de un típico escape de una válvula neumática de 1/2".

La zona crítica entre 1 y 4 KHz, es la donde el oído humano es más sensible y donde los efectos psicológicos a los altos niveles de sonido son más dañinos.

Como se observa en el diagrama la atenuación del sonido es de cerca de 20-25 dB a una presión de 6 bar.

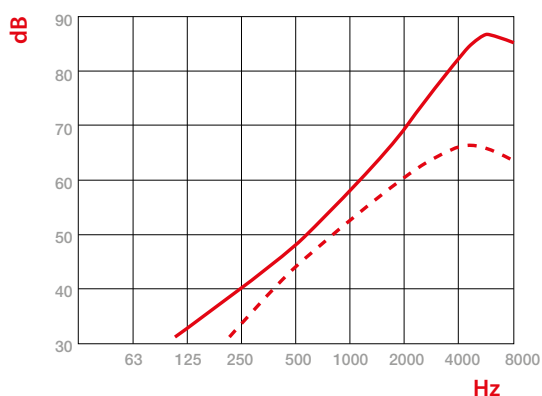
Atenuação acústica

PT

O diagrama mostra a distribuição da frequência da energia do som de um jato de ar a uma pressão pneumática de cerca de 6 bar de um típico escape de saída de uma válvula pneumática de 1/2".

A zona crítica entre 1 e 4 KHz, é a zona onde a audição humana é mais sensível e onde os efeitos psicológicos dos ruído podem causar maiores danos.

Como se pode notar no diagrama, a atenuação do som é de cerca de 20-25 dB a uma pressão de trabalho de 6 bar.



dB re 2x10⁻⁵ N/m²

Livello di pressione acustica
 Octave band sound pressure levels
 Schalldruck Pegel
 Niveau de pression acoustique
 Nivel de presión acústica
 Nivel de pressão sonora

Hz

Frequenza acustica
 Octave band centre frequencies
 Akustische Frequenz
 Fréquence acoustique
 Frecuencia acústica
 Frequência acústica

—

Scarico libero
 Exhaust to atmosphere
 Kostenlose Auspuff
 Échappement Libre
 Escape libre
 Descarga livre

- - - -

Scarico silenziato
 Silenced exhaust
 Schalldämpfer
 Silencieux d'échappement
 Escape silenciado
 Silenciador de escape

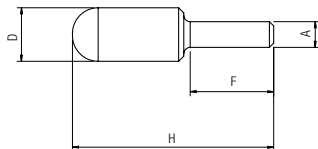
AS715

SILENZIATORE IN POLIETILENE PER RACCORDI AUTOMATICI

POROUS POLYETHYLENE SILENCER FOR PUSH-IN
 STECK-SCHALLDÄMPFER POLYETHYLEN
 SILENCIEUX ENCLIQUETABLE EN POLYÉTHYLÈNE
 SILENCIADOR EN POLIETILENO PARA RACORDAJE AUTOMÁTICO
 SILENCIADOR EM POLIETILENO PARA CONEXÃO PUSH-IN



Fino ad esaurimento scorte
 Until the end stock
 Nur solange vorrat
 jusqu'à épuisement du stock
 Hasta fin de stock
 Até fim do stock



| Code | A | F | H±3 | D | Pack. |
|---|----|------|---------|------------|------------|
| AS715 00 001 | 4 | 14 | 32 | 7,5 | 10 |
| AS715 00 002 | 6 | 22.2 | 47.5 | 13 | 10 |
| AS715 00 003 | 8 | 22.8 | 46.5 | 13.5 | 10 |
| AS715 00 004 | 10 | 27 | 58 | 15.5 | 10 |
| AS715 00 005 | 12 | 28.5 | 82.5 | 18.5 | 10 |
| | | | | min | max |
| Temperature | | | - 20 °C | + 80 °C | |
| Pressure | | | 10 bar | | |
| Soglia di filtrazione - Filtration threshold - Filterfeinheit <i>Capacité de filtration - Grado de filtración - Limite de filtragem</i> | | | 50 µm | | |

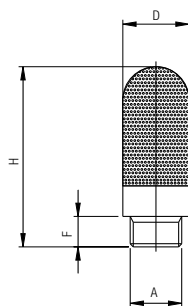
7105

SILENZIATORE IN POLIETILENE

POROUS POLYETHYLENE SILENCER
 SCHALLDÄMPFER POLYETHYLEN
 SILENCIEUX EN POLYÉTHYLÈNE
 SILENCIADOR EN POLIETILENO
 SILENCIADOR EM POLIETILENO



Fino ad esaurimento scorte
 Until the end stock
 Nur solange vorrat
 jusqu'à épuisement du stock
 Hasta fin de stock
 Até fim do stock



| Code | A | F | H | D | Pack. |
|---|-----|------|---------|------------|------------|
| 07105 00 001 | M5 | 4 | 24.5 | 7.5 | 10 |
| 07105 00 002 | 1/8 | 7 | 33.5 | 13 | 10 |
| 07105 00 003 | 1/4 | 8 | 40 | 17 | 10 |
| 07105 00 004 | 3/8 | 11 | 65 | 25 | 10 |
| 07105 00 005 | 1/2 | 11 | 71 | 25 | 10 |
| 07105 00 006 | 3/4 | 15.5 | 138 | 37 | 5 |
| 07105 00 007 | 1" | 19 | 157 | 47.5 | 5 |
| | | | | min | max |
| Temperature | | | - 20 °C | + 80 °C | |
| Pressure | | | 10 bar | | |
| Soglia di filtrazione - Filtration threshold - Filterfeinheit <i>Capacité de filtration - Grado de filtración - Limite de filtragem</i> | | | 50 µm | | |

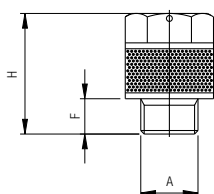
7115

SILENZIATORE IN POLIETILENE CON REGOLAZIONE DI SCARICO

POROUS POLYETHYLENE RESTRICTOR SILENCER
 SCHALLDÄMPFER POLYETHYLEN MIT EINSTELLBARER ABLUFT
 SILENCIEUX RÉGLEUR DE DÉBIT
 SILENCIADOR EN POLIETILENO CON REGULACIÓN DE ESCAPE
 SILENCIADOR EM POLIETILENO COM REGULAGEM DE ESCAPE



Fino ad esaurimento scorte
 Until the end stock
 Nur solange vorrat
 jusqu'à épuisement du stock
 Hasta fin de stock
 Até fim do stock



| Code | A | F | H | CH1 | CH2 | Pack. |
|---|-----|-----|---------|------------|------------|-------|
| 07115 00 002 | 1/8 | 5 | 20.5 | 13 | 2.5 | 10 |
| 07115 00 003 | 1/4 | 6 | 29 | 15 | 4 | 10 |
| 07115 00 004 | 3/8 | 7 | 38 | 20 | 6 | 10 |
| 07115 00 005 | 1/2 | 8.5 | 50 | 25 | 8 | 10 |
| | | | | min | max | |
| Temperature | | | - 20 °C | + 80 °C | | |
| Pressure | | | 10 bar | | | |
| Soglia di filtrazione - Filtration threshold - Filterfeinheit <i>Capacité de filtration - Grado de filtración - Limite de filtragem</i> | | | 50 µm | | | |

* Fino ad esaurimento scorte
 Until the end stock
 Nur solange vorrat
 Livrable jusqu'à épuisement du stock
 Hasta fin de stock
 Até fim do stock

GRAFICO SILENZIATORE 7105 1/8 - 1/4 - 3/8 - PRESSIONE A 5 BAR

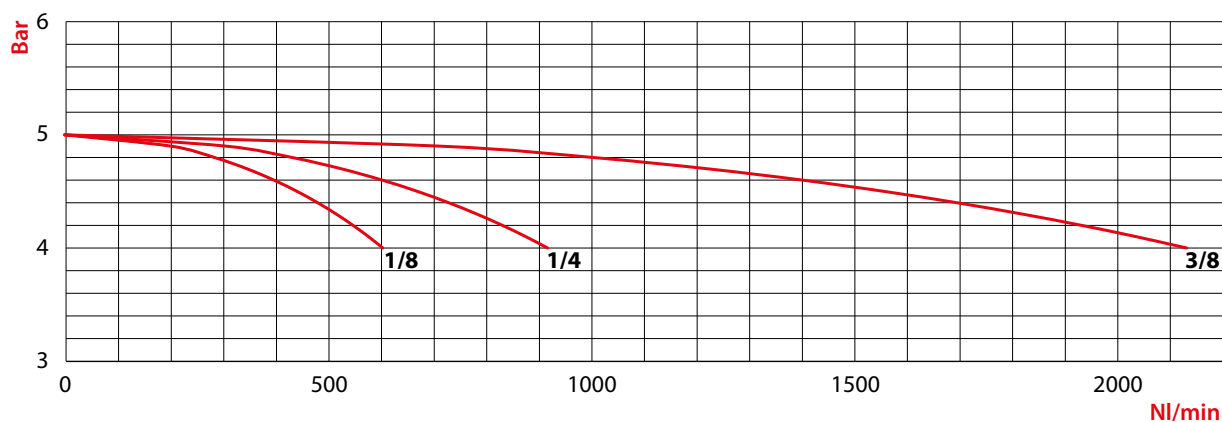
TEST GRAPH 7105 1/8 - 1/4 - 3/8 - 5 BAR PRESSURE

GRAFIK FÜR 7105 1/8 - 1/4 - 3/8 - 5 BAR DRUCK

GRAPHIQUE POUR 7105 1/8 - 1/4 - 3/8 - 5 BAR PRESSION

GRÁFICA PARA 7105 1/8 - 1/4 - 3/8 - 5 BAR DE PRESIÓN

GRÁFICO PARA 7105 1/8 - 1/4 - 3/8 - 5 BAR DE PRESSÃO


GRAFICO SILENZIATORE 7105 1/2 - 3/4 - 1" - PRESSIONE A 5 BAR

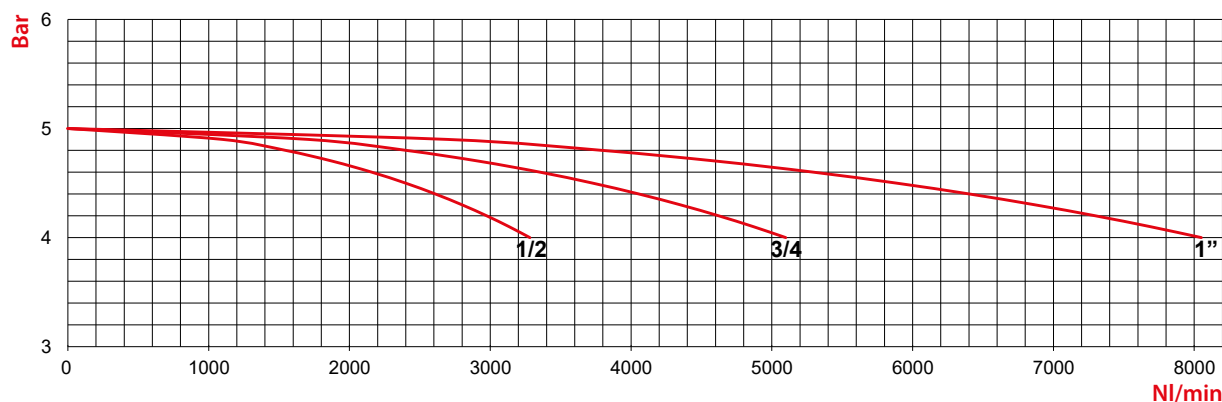
TEST GRAPH 7105 1/2 - 3/4 - 1" - 5 BAR PRESSURE

GRAFIK FÜR 7105 1/2 - 3/4 - 1" - 5 BAR DRUCK

GRAPHIQUE POUR 7105 1/2 - 3/4 - 1" - 5 BAR PRESSION

GRÁFICA PARA 7105 1/2 - 3/4 - 1" - 5 BAR DE PRESIÓN

GRÁFICO PARA 7105 1/2 - 3/4 - 1" - 5 BAR DE PRESSÃO



IT

L'unione di un'accurata e facile regolazione con gli elementi dei silenziatori porosi in polietilene aumenta quelle che sono le prestazioni di questo articolo, le cui caratteristiche sono riportate nel grafico.

GB

The combination of accurate and easy adjustment with the porous polyethylene silencing increase the performance of this article, which characteristics are shown in the diagram.

DE

Die Kombination von präziser und einfacher Regulierung, mit einem Schalldämpfer aus porösem Polyethylen, erhöhen die Leistungsfähigkeit dieses Artikels, dessen Merkmale im folgenden Diagramm dargestellt werden:

FR

Le réglage précis et facile du silencieux en polyéthylène permet d'augmenter les performances de cet article. Ces performances sont indiquées dans le diagramme.

ES

La unión de una curada y fácil regulación con los elementos del silenciador poroso en polietileno aumentan las prestaciones de este artículo, las características del cual son representadas en el gráfico adjunto.

PT

A união de uma precisa e fácil regulagem aos elementos silenciadores porosos em polietileno aumenta significativamente a performance do silenciador, cujas características podem ser verificadas no gráfico ao lado.

7120

SILENZIATORE A PASTIGLIA CON TAGLIO CACCIAVITE

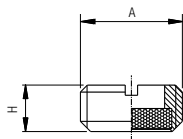
PAD SILENCER WITH SLOT FOR SCREWDRIVER

MINI-SCHALLDÄMPFER

SILENCIEUX COMPACT

SILENCIADOR DE PASTILLA CON CORTE PARA DESTORNILLADOR

SILENCIADOR TIPO PASTILHA COM FENDA PARA CHAVE



| Code | A | H | Pack. |
|--------------|-----|----|-------|
| 07120 00 001 | 1/8 | 4 | 10 |
| 07120 00 002 | 1/4 | 6 | 10 |
| 07120 00 003 | 3/8 | 6 | 10 |
| 07120 00 004 | 1/2 | 9 | 10 |
| 07120 00 005 | 3/4 | 10 | 10 |
| 07120 00 006 | 1" | 10 | 10 |

| | min | max |
|---|---------|---------|
| Temperature | - 10 °C | + 80 °C |
| Pressure | 10 bar | |
| Soglia di filtrazione - Filtration threshold - Filterfeinheit Capacité de filtration - Grado de filtración - Limite de filtragem | 120 µm | |

7130

SILENZIATORE A PASTIGLIA FILTRANTE CONICO TAGLIO CACCIAVITE

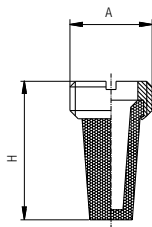
SILENCER WITH FILTERING PAD - (TAPER) WITH SLOT FOR SCREWDRIVER

MINI-SCHALLDÄMPFER MIT KONUSFILTER

SILENCIEUX COMPACT AVEC CÔNE INTÉRIEUR

SILENCIADOR DE PASTILLA FILTRANTE CÓNICO CON CORTE PARA DESTORNILLADOR

SILENCIADOR TIPO PASTILHA FILTRANTE CÓNICO C/ FENDA PARA CHAVE



| Code | A | H | Pack. |
|--------------|-----|----|-------|
| 07130 00 001 | 1/8 | 15 | 10 |
| 07130 00 002 | 1/4 | 18 | 10 |
| 07130 00 003 | 3/8 | 21 | 10 |
| 07130 00 004 | 1/2 | 27 | 10 |
| 07130 00 005 | 3/4 | 36 | 10 |
| 07130 00 006 | 1" | 46 | 10 |

| | min | max |
|---|---------|---------|
| Temperature | - 10 °C | + 80 °C |
| Pressure | 10 bar | |
| Soglia di filtrazione - Filtration threshold - Filterfeinheit Capacité de filtration - Grado de filtración - Limite de filtragem | 50 µm | |

7140

SILENZIATORE INTEGRALE CON TAGLIO CACCIAVITE

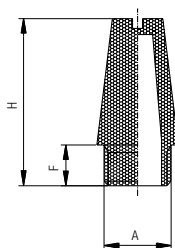
INTEGRAL SILENCER WITH SLOT FOR SCREWDRIVER

SCHALLDÄMPFER VOLLGESINTERT

SILENCIEUX EN BRONZE FRITTÉ AVEC FENTE DE SERRAGE

SILENCIADOR INTEGRAL CON CORTE PARA DESTORNILLADOR

SILENCIADOR INTEGRAL COM FENDA PARA CHAVE



| Code | A | H | F | Pack. |
|--------------|-----|----|-----|-------|
| 07140 00 001 | 1/8 | 21 | 5.5 | 10 |
| 07140 00 002 | 1/4 | 27 | 8.5 | 10 |
| 07140 00 003 | 3/8 | 36 | 11 | 10 |
| 07140 00 004 | 1/2 | 44 | 11 | 10 |
| 07140 00 005 | 3/4 | 63 | 13 | 10 |
| 07140 00 006 | 1" | 75 | 15 | 10 |

| | min | max |
|---|---------|----------|
| Temperature | - 20 °C | + 150 °C |
| Pressure | 10 bar | |
| Soglia di filtrazione - Filtration threshold - Filterfeinheit Capacité de filtration - Grado de filtración - Limite de filtragem | 50 µm | |

7150

SILENZIATORE INTEGRALE CON CHIAVE ESAGONALE

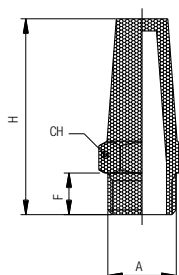
INTEGRAL SILENCER WITH HEXAGONAL WRENCH

SCHALLDÄMPFER VOLLGESINTERT

SILENCIEUX EN BRONZE FRITTÉ AVEC 6 PANS DE SERRAGE MÂLE

SILENCIADOR INTEGRAL CON LLAVE EXAGONAL

SILENCIADOR INTEGRAL COM ENCAIXE PARA CHAVE DE BOCA



| Code | A | CH | H | F | Pack. |
|--------------|-----|------|----|----|-------|
| 07150 00 001 | 1/8 | 28 | 6 | 13 | 10 |
| 07150 00 002 | 1/4 | 31.4 | 8 | 17 | 10 |
| 07150 00 003 | 3/8 | 36 | 10 | 22 | 10 |
| 07150 00 004 | 1/2 | 44 | 12 | 27 | 10 |
| 07150 00 005 | 3/4 | 54 | 14 | 32 | 10 |
| 07150 00 006 | 1" | 66 | 16 | 41 | 10 |

| | min | max |
|---|---------|----------|
| Temperature | - 20 °C | + 150 °C |
| Pressure | 10 bar | |
| Soglia di filtrazione - Filtration threshold - Filterfeinheit Capacité de filtration - Grado de filtración - Limite de filtragem | 50 µm | |

RACCORDI CON ATTACCO A BAIONETTA

FITTINGS WITH BAYONET CONNECTION
 VERSCHRAUBUNGEN MIT BAJONETT-VERSCHLUSS
 RACCORDS À FERMETURE À BAIONNETTE
 RACORDAJE CON CONEXIÓN A BAYONETA
 CONEXÕES COM ENCAIXE TIPO BAIONETTA



CARATTERISTICHE TECNICHE

TECHNICAL CHARACTERISTICS
 TECHNISCHE ANGABEN
 CARACTÉRISTIQUES TECHNIQUES
 CARACTERÍSTICAS TÉCNICAS
 CARACTERÍSTICAS TÉCNICAS



Norma di Riferimento

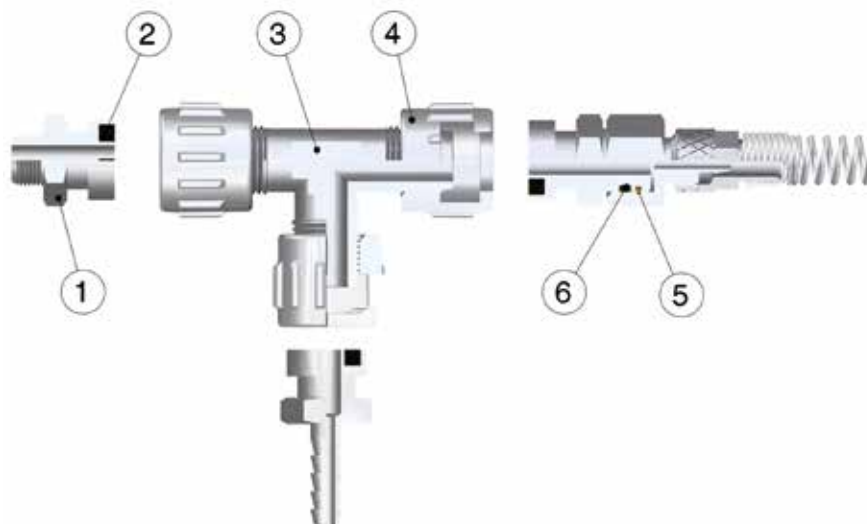
Reference standard

Entspricht der Norm

Norme de référence

Normativa de referencia

Norma de referência



Materiali e Componenti

IT

- 1 Baionetta in Ottone Nichelato
- 2 Guarnizione in NBR 90
- 3 Corpo in ottone nichelato
- 4 Dado capettato in zama nichelato
- 5 Seeger in bronzo
- 6 Guarnizione o-ring in NBR 70

Component Parts and Materials

GB

- 1 Nickel-plated brass Bayonet
- 2 NBR 90 Seals
- 3 Nickel-plated brass Body
- 4 Nickel-plated zamac Milled Nut
- 5 Bronze Seeger
- 6 NBR 70 o-ring seal

Komponenten und Materialien

DE

- 1 Bajonettanschluss Messing vernickelt
- 2 Dichtung NBR 90
- 3 Körper Messing vernickelt
- 4 Rändelmutter Zamac vernickelt
- 5 Seegerring Bronze
- 6 Dichtung O-Ring NBR 70

Matériaux et Composants

FR

- 1 Raccord baïonnette: laiton nickélé
- 2 Joint: NBR 90
- 3 Corps: laiton nickélé
- 4 Ecrou moleté: Zamac nickélé
- 5 Circlips: bronze
- 6 Joint torique: NBR 70

Materiales y Componentes

ES

- 1 Bayoneta en latón niquelado
- 2 Junta en NBR 90
- 3 Cuerpo en latón niquelado
- 4 Tuerca en níquel plateado zamac
- 5 Seeger en bronce
- 6 Junta o-ring en NBR 70

Materiais e Componentes

PT

- 1 Baioneta em Latão Niquelado
- 2 Vedação em NBR 90
- 3 Corpo em Latão Niquelado
- 4 Porca recartilhada em zamac Niquelado
- 5 Anel de retenção tipo Seeger em bronze
- 6 Vedação o-ring em NBR 70



Pressioni

Pressures

Druckbereich

Pressions

Presiones

Pressões

-0.99 bar (-0.099 MPa)

15 bar (1.5 MPa)



Temperature

Temperatures

Temperatur

Températures

Temperaturas

Temperaturas

- 20 °C

+ 70 °C



Fluidi compatibili

Aria compressa, fluidi e liquidi a bassa pressione compatibili con il tipo di accoppiamento.

Fluids

Compressed air, fluids and liquids at low pressure compatible with the connection.

Geeignete Medien

Druckluft, Medien und Flüssigkeiten bei niedrigem Druck die kompatibel mit den Anschlüssen sind.

Fluides compatibles

Air comprimé et fluides compatibles avec les matériaux des composants.

Fluidos compatibles

Aire comprimido, fluidos o líquidos a baja presión compatibles con el tipo de conexión.

Fluidos compatíveis

Ar comprimido, fluidos e líquidos a baixa pressão compatíveis com o tipo de conexão.

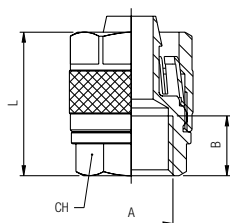


| | | | | | |
|--|-----------|--|-----------|---|-----------|
| Filettatura Gas cilindrica conforme ISO 228 Classe A. Metrica conforme ISO R/262. | IT | Threads Parallel gas in conformity with ISO 228 Class A. Metric in conformity with ISO R/262. | GB | Gewindearten Zylindrisches Gewinde nach Norm ISO 228 Classe A. Metrisches Gewinde nach Norm ISO R/262. | DE |
|--|-----------|--|-----------|---|-----------|

| | | | | | |
|--|-----------|---|-----------|---|-----------|
| Filetages Filetage cylindrique conforme: ISO 228 Classe A. Filetage métrique conforme: ISO R/262. | FR | Roscas Gas cilíndrica conforme ISO 228 Classe A. Métrica conforme ISO R/262. | ES | Roscas Gas paralela conforme ISO 228 Classe A. Métrica conforme ISO R/262. | PT |
|--|-----------|---|-----------|---|-----------|

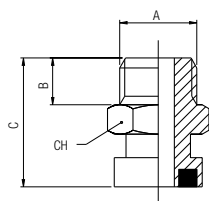
1810

RACCORDI PER TUBI IN GOMMA
FITTING FOR RUBBER HOSE
VERSCHRAUBUNG FÜR GUMMISCHLAUCH
RACCORD POUR TUBE CAOUTCHOUC
RACORDAJE PARA TUBERÍA EN GOMA
CONEXÃO PARA TUBOS DE BORRACHA



| Code | Tube | A | B | L | CH | Pack. |
|--------------|-------|-----|----|----|----|-------|
| 01810 00 003 | 14/6 | 1/4 | 11 | 30 | 16 | 10 |
| 01810 00 005 | 17/8 | 1/4 | 11 | 31 | 16 | 10 |
| 01810 00 006 | 19/10 | 1/4 | 11 | 31 | 17 | 10 |
| 01810 00 007 | 23/13 | 1/2 | 17 | 36 | 24 | 10 |

RACCORDI PER TUBI IN POLIURETANO INTRECCIATO
FITTINGS FOR BRAIDED POLYURETHANE HOSES
VERSCHRAUBUNG FÜR POLYURETHANROHR MIT GEWEBE
RACCORD POUR TUBE POLYURÉTHANE TRESSÉ
RACORDAJE PARA TUBO EN POLIURETANO TRENZADO
CONEXÕES PARA TUBOS EM POLIURETANO TRANÇADO

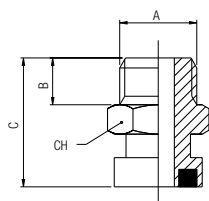


SEE PAG 14.16

| Code | Tube | A | B | L | CH | Pack. |
|--------------|-------|-----|----|----|----|-------|
| 01810 00 001 | 10/6 | 1/4 | 11 | 30 | 15 | 10 |
| 01810 00 002 | 12/8 | 1/4 | 11 | 31 | 16 | 10 |
| 01810 00 004 | 15/10 | 1/4 | 11 | 31 | 17 | 10 |

1830

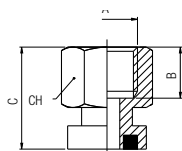
RACCORDO MASCHIO A BAIONETTA
MALE BAYONET
BAJONETTANSCHLUSS AUSSENGEW.
RACCORD DROIT MÂLE
MACHO A BAYONETA
CONEXÃO COM ROSCA MACHO E ENCAIXE TIPO BAIONETA



| Code | A | B | C | CH | Pack. |
|--------------|-----|---|------|----|-------|
| 01830 00 001 | 1/8 | 6 | 19.5 | 15 | 10 |
| 01830 00 002 | 1/4 | 8 | 22 | 15 | 10 |
| 01830 00 003 | 3/8 | 9 | 23 | 19 | 10 |

1831

RACCORDO FEMMINA A BAIONETTA
FEMALE BAYONET
BAJONETTANSCHLUSS INNENGEW.
RACCORD DROIT FEMELLE
HEMBA A BAYONETA
CONEXÃO COM ROSCA FÊMEA E ENCAIXE TIPO BAIONETA

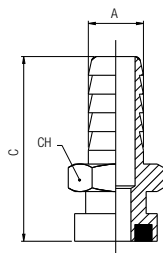


| Code | A | B | C | CH | Pack. |
|--------------|-----|-----|------|----|-------|
| 01831 00 001 | 1/8 | 8.5 | 19.5 | 15 | 10 |
| 01831 00 002 | 1/4 | 11 | 22 | 17 | 10 |
| 01831 00 003 | 3/8 | 11 | 22 | 20 | 10 |

1832

RACCORDO BAIONETTA A RESCA

BARBED BAYONET
BAJONETTANSCHLUSS MIT SCHLAUCHTÜLLE
RACCORD DROIT À CANULE
ESPIGA A BAYONETA
CONEXÃO ESPIGÃO E ENCAIXE TIPO BAIONETA

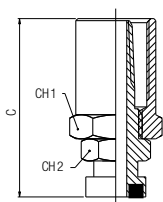


| Code | A | C | CH | Pack. |
|--------------|----|------|----|-------|
| 01832 00 001 | 6 | 33.5 | 15 | 10 |
| 01832 00 002 | 7 | 33.5 | 15 | 10 |
| 01832 00 003 | 8 | 33.5 | 15 | 10 |
| 01832 00 004 | 9 | 33.5 | 15 | 10 |
| 01832 00 005 | 10 | 33.5 | 15 | 10 |
| 01832 00 006 | 12 | 33.5 | 15 | 10 |

1833

RACCORDO BAIONETTA PORTAGOMMA

BAYONET FOR RUBBER HOSE
BAJONETTANSCHLUS FÜR GUMMISCHLAUCH
RACCORD DROIT POUR TUBE CAOUTCHOUC
BAYONETA PORTAGOMA
CONEXÃO PARA MANGUEIRA DE BORRACHA E ENCAIXE TIPO BAIONETA

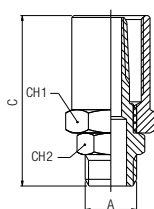


| Code | Tube | CH1 | CH2 | C | Pack. |
|--------------|-------|-----|-----|------|-------|
| 01833 00 001 | 14/6 | 17 | 15 | 44.5 | 10 |
| 01833 00 002 | 17/8 | 20 | 15 | 44.5 | 10 |
| 01833 00 003 | 19/10 | 22 | 15 | 44.5 | 10 |

1840

RACCORDO MASCHIO PORTAGOMMA

MALE FOR RUBBER HOSE
VERSCHRAUBUNG FÜR GUMMISCHLAUCH AUSSENGEW.
RACCORD DROIT MÂLE POUR TUBE CAOUTCHOUC
MACHO PORTAGOMA
CONEXÃO COM ROSCA MACHO PARA MANGUEIRA DE BORRACHA

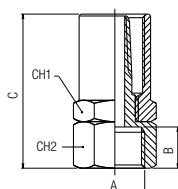


| Code | Tube | A | CH1 | CH2 | C | Pack. |
|--------------|-------|-----|-----|-----|----|-------|
| 01840 00 008 | 10/6 | 1/4 | 15 | 17 | 43 | 10 |
| 01840 00 009 | 12/8 | 1/4 | 15 | 17 | 43 | 10 |
| 01840 00 001 | 14/6 | 1/4 | 17 | 17 | 43 | 10 |
| 01840 00 010 | 15/10 | 1/4 | 18 | 17 | 43 | 10 |
| 01840 00 002 | 17/8 | 1/4 | 20 | 17 | 43 | 10 |
| 01840 00 003 | 17/8 | 3/8 | 20 | 19 | 44 | 10 |
| 01840 00 006 | 17/10 | 1/4 | 20 | 17 | 43 | 10 |
| 01840 00 004 | 19/10 | 1/4 | 22 | 17 | 43 | 10 |
| 01840 00 005 | 19/10 | 3/8 | 22 | 19 | 44 | 10 |

1841

RACCORDO FEMMINA PORTAGOMMA

FEMALE FOR RUBBER HOSE
VERSCHRAUBUNG FÜR GUMMISCHLAUCH INNENGEW.
RACCORD DROIT FEMELLE POUR TUBE CAOUTCHOUC
HEMERA PORTAGOMA
CONEXÃO COM ROSCA FÊMEA PARA MANGUEIRA DE BORRACHA



| Code | Tube | A | B | C | CH1 | CH2 | Pack. |
|--------------|-------|-----|------|------|-----|-----|-------|
| 01841 00 006 | 10/6 | 1/4 | 11 | 43 | 15 | 17 | 10 |
| 01841 00 007 | 12/8 | 1/4 | 11 | 43 | 15 | 17 | 10 |
| 01841 00 001 | 14/6 | 1/4 | 11 | 43 | 17 | 17 | 10 |
| 01841 00 008 | 15/10 | 1/4 | 11 | 43 | 18 | 17 | 10 |
| 01841 00 002 | 17/8 | 1/4 | 11 | 43 | 20 | 17 | 10 |
| 01841 00 003 | 17/8 | 3/8 | 11.5 | 43.5 | 20 | 20 | 10 |
| 01841 00 004 | 19/10 | 1/4 | 11 | 43 | 22 | 17 | 10 |
| 01841 00 005 | 19/10 | 3/8 | 11.5 | 43.5 | 22 | 20 | 10 |

1850

RACCORDO MASCHIO CON DADO CAPETTATO

MALE WITH MILLED NUT

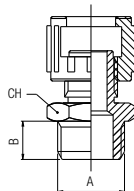
VERSCHRAUBUNG MIT RÄNDELMUTTER AUSSENGEW.

RACCORD DROIT MÂLE AVEC ÉCROU MOLETÉ

MACHO CON TUERCA

CONEXÃO COM ROSCA MACHO E PORCA RECARILHADA

| Code | A | B | CH | Pack. |
|--------------|-----|---|----|-------|
| 01850 00 001 | 1/8 | 6 | 14 | 10 |
| 01850 00 002 | 1/4 | 8 | 15 | 10 |
| 01850 00 003 | 3/8 | 9 | 19 | 10 |



1851

RACCORDO FEMMINA CON DADO CAPETTATO

FEMALE WITH MILLED NUT

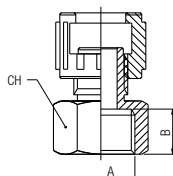
VERSCHRAUBUNG MIT RÄNDELMUTTER INNENGEW.

RACCORD DROIT FEMELLE AVEC ÉCROU MOLETÉ

HEMBRA CON TUERCA

CONEXÃO COM ROSCA FÊMEA E PORCA RECARILHADA

| Code | A | B | CH | Pack. |
|--------------|-----|----|----|-------|
| 01851 00 001 | 1/4 | 11 | 17 | 10 |
| 01851 00 002 | 3/8 | 11 | 20 | 10 |



1852

RACCORDO DOPPIO DADO CAPETTATO

DOUBLE MILLED NUT

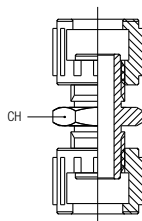
VERBINDUNGSVERSCHRAUBUNG MIT RÄNDELMUTTERN

RACCORD UNION AVEC ÉCROUS MOLETÉS

UNIÓN CON TUERCA

CONEXÃO DE DUAS PORCAS RECARILHADAS

| Code | A | CH | Pack. |
|--------------|-----|----|-------|
| 01852 00 001 | 1/4 | 15 | 10 |



1853

RACCORDO T CON DADI CAPETTATI

TEE WITH MILLED NUTS

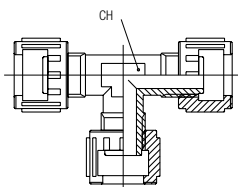
T-VERSCHRAUBUNG MIT RÄNDELMUTTERN

RACCORD TÉ AVEC ÉCROUS MOLETÉS

T CON TUERCA

CONEXÃO EM "T" COM PORCAS RECARILHADAS

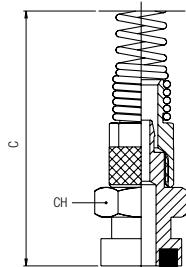
| Code | A | CH | Pack. |
|--------------|-----|----|-------|
| 01853 00 001 | 1/4 | 15 | 10 |



1855

RACCORDO DIRITTO CON ATTACCO A BAIONETTA + DADO CON MOLLA

STRAIGHT FITTING WITH BAYONET CONNECTION + NUT AND SPRING
 VERSCHRAUBUNG MIT BAJONETT-VERSCHLUSS + KNICKSCHUTZFEDER
 RACCORD DROIT AVEC RESSORT DE PROTECTION
 RACOR RECTO A BAYONETA + TUERCA CON MUELLE
 CONEXÃO RETA COM ENCAIXE TIPO BAIONETA + PORCA COM MOLA



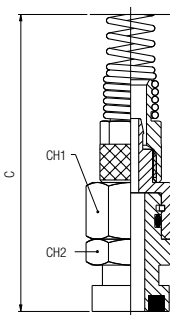
| Code | Tube | C | CH | Pack. |
|--------------|-------|-----|----|-------|
| 01855 00 001 | 6/4 | 110 | 15 | 10 |
| 01855 00 002 | 8/6 | 115 | 15 | 10 |
| 01855 00 003 | 10/8 | 123 | 15 | 10 |
| 01855 00 004 | 12/10 | 130 | 16 | 10 |

Molla Acciaio Inox AISI 304 - EN 1.4301
 Stainless Steel Spring AISI 304 - EN 1.4301
 Edelstahlfeder AISI 304 - EN 1.4301
 Ressort Acier Inoxydable AISI 304 - EN 1.4301
 Muelle Acero Inoxidable AISI 304 - EN 1.4301
 Mola Aço Inoxidável AISI 304 - EN 1.4301

1860

RACCORDO DIRITTO ORIENTABILE CON ATTACCO A BAIONETTA + DADO CON MOLLA

ORIENTING STRAIGHT FITTING WITH BAYONET CONNECTION + NUT AND SPRING
 VERSCHRAUBUNG DREHBAR MIT BAJONETT-VERSCHLUSS + KNICKSCHUTZFEDER
 RACCORD DROIT ORIENTABLE AVEC RESSORT DE PROTECTION
 RACOR RECTO GIRATORIO A BAYONETA + TUERCA CON MUELLE
 CONEXÃO RETA ORIENTÁVEL COM ENCAIXE TIPO BAIONETA + PORCA COM MOLA



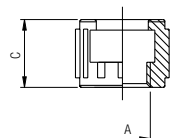
| Code | Tube | C | CH1 | CH2 | Pack. |
|--------------|-------|-----|-----|-----|-------|
| 01860 00 001 | 6/4 | 120 | 15 | 15 | 10 |
| 01860 00 002 | 8/6 | 125 | 15 | 15 | 10 |
| 01860 00 003 | 10/8 | 134 | 15 | 15 | 10 |
| 01860 00 004 | 12/10 | 141 | 17 | 17 | 10 |

Molla Acciaio Inox AISI 304 - EN 1.4301
 Stainless Steel Spring AISI 304 - EN 1.4301
 Edelstahlfeder AISI 304 - EN 1.4301
 Ressort Acier Inoxydable AISI 304 - EN 1.4301
 Muelle Acero Inoxidable AISI 304 - EN 1.4301
 Mola Aço Inoxidável AISI 304 - EN 1.4301

1808

DADO CAPETTATO

MILLED NUT
 RÄNDELMUTTER
 ÉCROU MOLETÉ
 TUERCA
 PORCA RECARTILHADA

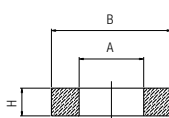


| Code | A | C | Pack. |
|-------------------|-----|----|-------|
| 01808 00 80 03 NT | 1/4 | 16 | 20 |

1864

GUARNIZIONE DI TENUTA PER RACCORDI CON ATTACCO A BAIONETTA

TIGHTENING SEAL FOR FITTINGS WITH BAYONET CONNECTION
 DICHTUNG FÜR BAJONETT-ANSCHLÜSSE
 JOINT POUR RACCORD À BAIJONNETTE
 JUNTA PARA RACORES A BAYONETA
 VEDAÇÃO PARA CONEXÕES COM ENCAIXE TIPO BAIONETA



| Code | A | B | H | Pack. |
|-------------------|---|----|---|-------|
| 01864 00 24 Z7 00 | 7 | 13 | 3 | 50 |

RACCORDI PORTAGOMMA PER TUBI IN MATERIALE PLASTICO

HOSE ADAPTERS FOR PLASTIC TUBES
 SCHLAUCHARMATUREN FÜR KUNSTSTOFFROHRE
 RACCORDS À CANULE POUR TUBES PLASTIQUES
 RACORDAJE PORTAGOMA PARA TUBO EN MATERIAL PLÁSTICO
 CONEXÕES ESPIGÃO PARA TUBOS EM MATERIAL PLÁSTICO



CARATTERISTICHE TECNICHE

TECHNICAL CHARACTERISTICS
 TECHNISCHE ANGABEN
 CARACTÉRISTIQUES TECHNIQUES
 CARACTERÍSTICAS TÉCNICAS
 CARACTERÍSTICAS TÉCNICAS



1907/2006

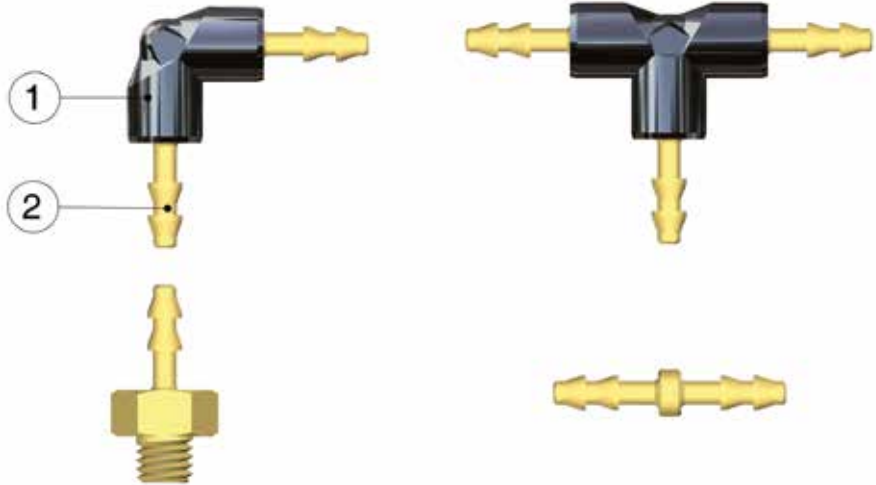
REACH

2011/65/CE

RoHS

PED
2014/68/UE

SILICON
FREE



Materiali e Componenti

IT

- 1 Corpo in Tecnopolimero
- 2 Portagomma in ottone

Component Parts and Materials

GB

- 1 Technopolymer Body
- 2 Brass Hose Adapter

Komponenten und Materialien

DE

- 1 Körper Technopolymer
- 2 Schlauchtülle Messing

Matériaux et Composants

FR

- 1 Corps: technopolymère
- 2 Canule: laiton

Materiales y Componentes

ES

- 1 Cuerpo en tecnopolímero
- 2 Portagoma en latón

Materiais e Componentes

PT

- 1 Corpo em Tecnopolímero
- 2 Espigão em Latão



Pressioni

Pressures
 Druckbereich
 Pressions
 Presiones
 Pressões

-0.99 bar (-0.099 MPa)

10 bar (1 MPa)



Temperature

Temperatures
 Temperatur
 Températures
 Temperaturas
 Temperaturas

- 10 °C

+ 80 °C



Fluidi compatibili

Aria compressa

Fluids
 Compressed air

Geeignete Medien
 Druckluft

Fluides compatibles
 Air comprimé

Fluidos compatibles
 Aire comprimido

Fluidos compatíveis
 Ar comprimido



Tubi di Collegamento

IT

Tubi in materiale plastico.

Connection Tubes

GB

Plastic tubes.

Geeignete Rohre

DE

Kunststoffrohre.

Tubes Conseillés

FR

Tubes plastiques.

Tubos de Conexión

ES

Tubos en material plástico.

Tubos de Conexão

PT

Tubos em material plástico.



Filettatura

IT

Metrica conforme ISO R/262.

Threads

GB

Metric in conformity with ISO R/262.

Gewindearten

DE

Metrisches Gewinde nach Norm ISO R/262.

Filetages

FR

Filetage métrique conforme: ISO R/262.

Roscas

ES

Métrica conforme ISO R/262.

Roscas

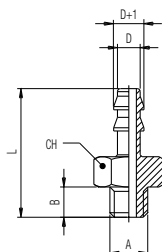
PT

Métrica conforme ISO R/262.

15000

RACCORDO PORTAGOMMA DIRITTO MASCHIO

STRAIGHT HOSE MALE ADAPTOR
 VERSCHRAUBUNG MIT SCHLAUCHTÜLLE AUSSENGEW.
 RACCORD DROIT MÂLE À CANULE
 RACOR PORTAGOMA RECTO MACHO
 CONEXÃO ESPIGÃO RETA COM ROSCA MACHO

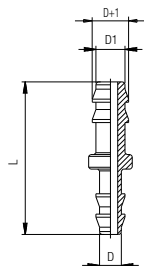


| Code | D | A | B | L | CH | Pack. |
|-------------------|---|----|---|----|----|-------|
| 15000 00 01 4V 00 | 2 | M5 | 4 | 17 | 8 | 10 |
| 15000 00 01 6Q 00 | 3 | M5 | 4 | 17 | 8 | 10 |
| 15000 00 01 0R 00 | 4 | M5 | 4 | 18 | 8 | 10 |
| 15000 00 01 7S 00 | 6 | M5 | 4 | 18 | 8 | 10 |

15040

RACCORDO PORTAGOMMA DIRITTO INTERMEDIO

STRAIGHT HOSE ADAPTOR
 VERBINDUNGSVERSCHRAUBUNG MIT SCHLAUCHTÜLLEN
 RACCORD UNION À CANULES
 RACOR PORTAGOMA RECTO INTERMEDIO
 CONEXÃO ESPIGÃO RETA

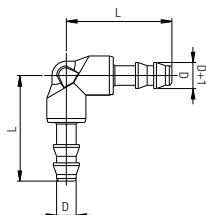


| Code | D | D1 | L | Pack. |
|-------------------|---|----|----|-------|
| 15040 00 01 W9 00 | 2 | 2 | 20 | 10 |
| 15040 00 01 FG 00 | 3 | 2 | 20 | 10 |
| 15040 00 01 X0 00 | 3 | 3 | 20 | 10 |
| 15040 00 01 FH 00 | 4 | 3 | 21 | 10 |
| 15040 00 01 X1 00 | 4 | 4 | 22 | 10 |
| 15040 00 01 FM 00 | 6 | 4 | 22 | 10 |
| 15040 00 01 X4 00 | 6 | 6 | 22 | 10 |

15130

RACCORDO PORTAGOMMA A L INTERMEDIO

ELBOW HOSE ADAPTOR
 WINKELVERSCHRAUBUNG MIT SCHLAUCHTÜLLEN
 RACCORD EQUERRE À CANULES
 RACOR PORTAGOMA A L INTERMEDIO
 CONEXÃO ESPIGÃO EM "L"

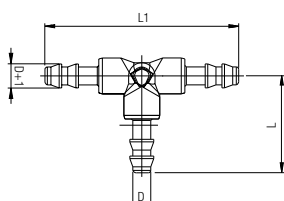


| Code | D | L | Pack. |
|--------------|---|------|-------|
| 15130 00 001 | 2 | 17.5 | 10 |
| 15130 00 002 | 3 | 17.5 | 10 |
| 15130 00 003 | 4 | 22 | 10 |
| 15130 00 004 | 6 | 22 | 10 |

15230

RACCORDO PORTAGOMMA A T INTERMEDIO

TEE HOSE ADAPTOR
 T-VERSCHRAUBUNG MIT SCHLAUCHTÜLLEN
 RACCORD TÉ À CANULES
 RACOR PORTAGOMA A T INTERMEDIO
 CONEXÃO ESPIGÃO EM "T"



| Code | D | L | L1 | Pack. |
|--------------|---|------|----|-------|
| 15230 00 001 | 2 | 17.5 | 35 | 10 |
| 15230 00 002 | 3 | 17.5 | 35 | 10 |
| 15230 00 003 | 4 | 22 | 44 | 10 |
| 15230 00 004 | 6 | 22 | 44 | 10 |